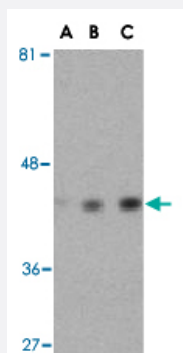


ACTB polyclonal antibody

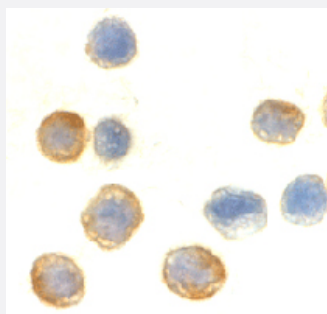
Catalog # PAB13193 Size 100 ug

Applications



Western Blot (Cell lysate)

Western blot analysis of ACTB in HeLa cell lysate with ACTB polyclonal antibody (Cat # PAB13193) at (A) 0.5, (B) 1 and (C) 2 ug/mL .



Immunocytochemistry

Immunocytochemistry of ACTB in HeLa cells with ACTB polyclonal antibody (Cat # PAB13193) at 10 ug/mL .

Specification

Product Description	Rabbit polyclonal antibody raised against synthetic peptide of ACTB.
Immunogen	A synthetic peptide corresponding to C-terminus 16 amino acids of human ACTB.
Host	Rabbit
Reactivity	Human, Mouse, Rat
Form	Liquid
Recommend Usage	Western Blot (1-2 ug/mL) The optimal working dilution should be determined by the end user.

Storage Buffer	In PBS (0.02% sodium azide)
Storage Instruction	Store at 4°C for three months. For long term storage store at -20°C. Aliquot to avoid repeated freezing and thawing.
Note	This product contains sodium azide: a POISONOUS AND HAZARDOUS SUBSTANCE which should be handled by trained staff only.

Applications

- Western Blot (Cell lysate)

Western blot analysis of ACTB in HeLa cell lysate with ACTB polyclonal antibody (Cat # PAB13193) at (A) 0.5, (B) 1 and (C) 2 ug/mL .

- Immunocytochemistry

Immunocytochemistry of ACTB in HeLa cells with ACTB polyclonal antibody (Cat # PAB13193) at 10 ug/mL .

Gene Info — ACTB

Entrez GeneID	60
Protein Accession#	AAH02409
Gene Name	ACTB
Gene Alias	PS1TP5BP1
Gene Description	actin, beta
Omim ID	102630
Gene Ontology	Hyperlink
Gene Summary	This gene encodes one of six different actin proteins. Actins are highly conserved proteins that are involved in cell motility, structure, and integrity. This actin is a major constituent of the contractile apparatus and one of the two nonmuscle cytoskeletal actins. [provided by RefSeq]
Other Designations	PS1TP5-binding protein 1 actin, cytoplasmic 1 beta actin beta cytoskeletal actin

Publication Reference

- [The actin cytoskeleton: a key regulator of apoptosis and ageing?](#)

Gourlay CW, Ayscough KR.

Nature Reviews. Molecular Cell Biology 2005 Jul; 6(7):583.

Application: WB, Human, Human mammalian cells

- [The actin cytoskeleton in normal and pathological cell motility.](#)

Lambrechts A, Van Troys M, Ampe C.

The International Journal of Biochemistry & Cell Biology 2004 Oct; 36(10):1890.

Application: IF, WB, Human, Mammalian cells

Pathway

- [Adherens junction](#)
- [Arrhythmogenic right ventricular cardiomyopathy \(ARVC\)](#)
- [Focal adhesion](#)
- [Hypertrophic cardiomyopathy \(HCM\)](#)
- [Leukocyte transendothelial migration](#)
- [Pathogenic Escherichia coli infection - EHEC](#)
- [Regulation of actin cytoskeleton](#)
- [Tight junction](#)
- [Vibrio cholerae infection](#)

Disease

- [Breast cancer](#)
- [Breast Neoplasms](#)