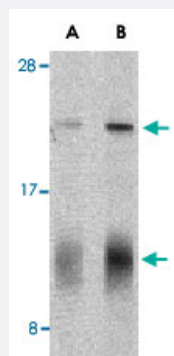


# IL32 polyclonal antibody

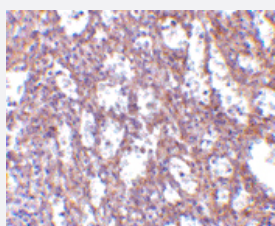
Catalog # PAB13185      Size 100 ug

## Applications



### Western Blot (Tissue lysate)

Western blot analysis of IL32 in human spleen tissue lysate with IL32 polyclonal antibody (Cat # PAB13185) at (A) 5 and (B) 10 ug/mL shows two isoforms of IL-32.



### Immunohistochemistry (Formalin/PFA-fixed paraffin-embedded sections)

Immunohistochemistry of IL32 in human spleen tissue with IL32 polyclonal antibody (Cat # PAB13185) at 10 ug/mL .

## Specification

<b>Product Description</b>	Rabbit polyclonal antibody raised against synthetic peptide of IL32.
<b>Immunogen</b>	A synthetic peptide corresponding to C-terminus 15 amino acids of human IL32.
<b>Host</b>	Rabbit
<b>Reactivity</b>	Human, Mouse
<b>Specificity</b>	This antibody detects all isoforms of IL-32.
<b>Form</b>	Liquid

<b>Recommend Usage</b>	Western Blot (5-10 ug/mL) The optimal working dilution should be determined by the end user.
<b>Storage Buffer</b>	In PBS (0.02% sodium azide)
<b>Storage Instruction</b>	Store at 4°C for three months. For long term storage store at -20°C. Aliquot to avoid repeated freezing and thawing.
<b>Note</b>	This product contains sodium azide: a POISONOUS AND HAZARDOUS SUBSTANCE which should be handled by trained staff only.

## Applications

- Western Blot (Tissue lysate)

Western blot analysis of IL32 in human spleen tissue lysate with IL32 polyclonal antibody (Cat # PAB13185) at (A) 5 and (B) 10 ug/mL shows two isoforms of IL-32.

- Immunohistochemistry (Formalin/PFA-fixed paraffin-embedded sections)

Immunohistochemistry of IL32 in human spleen tissue with IL32 polyclonal antibody (Cat # PAB13185) at 10 ug/mL .

## Gene Info — IL32

<b>Entrez GeneID</b>	<a href="#">9235</a>
<b>Protein Accession#</b>	<a href="#">AAH09401</a>
<b>Gene Name</b>	IL32
<b>Gene Alias</b>	IL-32alpha, IL-32beta, IL-32delta, IL-32gamma, NK4, TAIF, TAIFa, TAIFb, TAIFc, TAIFd
<b>Gene Description</b>	interleukin 32
<b>Omim ID</b>	<a href="#">606001</a>
<b>Gene Ontology</b>	<a href="#">Hyperlink</a>
<b>Gene Summary</b>	This gene encodes a member of the cytokine family. The protein contains a tyrosine sulfation site, 3 potential N-myristoylation sites, multiple putative phosphorylation sites, and an RGD cell-attachment sequence. Expression of this protein is increased after the activation of T-cells by mitogens or the activation of NK cells by IL-2. This protein induces the production of TNFalpha from macrophage cells. Alternate transcriptional splice variants, encoding different isoforms, have been characterized. [provided by RefSeq]
<b>Other Designations</b>	natural killer cell transcript 4 natural killer cells protein 4 tumor necrosis factor alpha-inducing factor

## Publication Reference

- [Interleukin-32, CCL2, PF4F1 and GFD10 are the only cytokine/chemokine genes differentially expressed by in vitro cultured rheumatoid and osteoarthritis fibroblast-like synoviocytes.](#)

Cagnard N, Letourneur F, Essabbani A, Devauchelle V, Mistou S, Rapinat A, Decraene C, Fournier C, Chiocchia G.

Eur Cytokine Netw 2005 Dec; 16(4):289.

- [Interleukin-32: a cytokine and inducer of TNFalpha.](#)

Kim SH, Han SY, Azam T, Yoon DY, Dinarello CA.

Immunity 2005 Jan; 22(1):131.

Application: Neutralization, WB, Human, Human A-549, COS-7, Wish cells, Recombinant protein

- [Identification of a novel gene expressed in activated natural killer cells and T cells.](#)

Dahl CA, Schall RP, He HL, Cairns JS.

The Journal of Immunology 1992 Jan; 148(2):597.