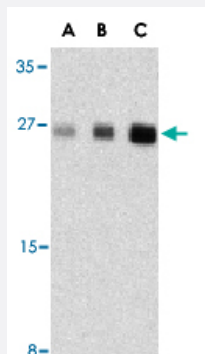


# IL31 polyclonal antibody

Catalog # PAB13184      Size 100 ug

## Applications



### Western Blot (Tissue lysate)

Western blot analysis of IL31 in human skeletal muscle tissue lysate with IL31 polyclonal antibody (Cat # PAB13184) at (A) 2.5, (B) 5 and (C) 10 ug/mL .

## Specification

<b>Product Description</b>	Rabbit polyclonal antibody raised against synthetic peptide of IL31.
<b>Immunogen</b>	A synthetic peptide corresponding to internal region 18 amino acids of human IL31.
<b>Host</b>	Rabbit
<b>Reactivity</b>	Human, Mouse
<b>Form</b>	Liquid
<b>Recommend Usage</b>	Western Blot (2.5-5 ug/mL) The optimal working dilution should be determined by the end user.
<b>Storage Buffer</b>	In PBS (0.02% sodium azide)
<b>Storage Instruction</b>	Store at 4°C for three months. For long term storage store at -20°C. Aliquot to avoid repeated freezing and thawing.
<b>Note</b>	This product contains sodium azide: a POISONOUS AND HAZARDOUS SUBSTANCE which should be handled by trained staff only.

## Applications

- Western Blot (Tissue lysate)

Western blot analysis of IL31 in human skeletal muscle tissue lysate with IL31 polyclonal antibody (Cat # PAB13184) at (A) 2.5, (B) 5 and (C) 10 ug/mL .

## Gene Info — IL31

Entrez GeneID	<a href="#">386653</a>
Protein Accession#	<a href="#">AAS82846</a>
Gene Name	IL31
Gene Alias	IL-31
Gene Description	interleukin 31
Omim ID	<a href="#">609509</a>
Gene Ontology	<a href="#">Hyperlink</a>
Gene Summary	IL31, which is made principally by activated Th2-type T cells, interacts with a heterodimeric receptor consisting of IL31RA (MIM 609510) and OSMR (MIM 601743) that is constitutively expressed on epithelial cells and keratinocytes. IL31 may be involved in the promotion of allergic skin disorders and in regulating other allergic diseases, such as asthma (Dillon et al., 2004 [PubMed 15184896]).[supplied by OMIM]
Other Designations	-

## Publication Reference

- [IL-31 is associated with cutaneous lymphocyte antigen-positive skin homing T cells in patients with atopic dermatitis.](#)

Bilsborough J, Leung DY, Maurer M, Howell M, Boguniewicz M, Yao L, Storey H, LeCiel C, Harder B, Gross JA.

The Journal of Allergy and Clinical Immunology 2006 Feb; 117(2):418.

- [Predominant expression of the long isoform of GP130-like \(GPL\) receptor is required for interleukin-31 signaling.](#)

Diveu C, Lak-Hal AH, Froger J, Ravon E, Grimaud L, Barbier F, Hermann J, Gascan H, Chevalier S.

Eur Cytokine Netw 2004 Oct; 15(4):291.

- [Interleukin 31, a cytokine produced by activated T cells, induces dermatitis in mice.](#)

Dillon SR, Sprecher C, Hammond A, Bilsborough J, Rosenfeld-Franklin M, Presnell SR, Haugen HS, Maurer M, Harder B, Johnston J, Bort S, Mudri S, Kuijper JL, Bukowski T, Shea P, Dong DL, Dasovich M, Grant FJ, Lockwood L, Levin SD, LeCiel C, Waggle K, Day H, Topouzis S, Kramer J, Kuestner R, Chen Z, Foster D, Parrish-Novak J, Gross JA.

Nature Immunology 2004 Jul; 5(7):752.

## Disease

- [Eczema](#)