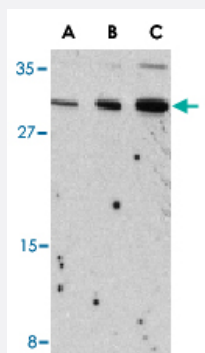


Il31 polyclonal antibody

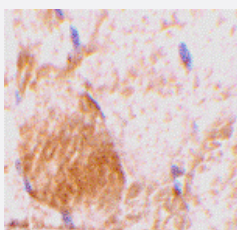
Catalog # PAB13183 Size 100 ug

Applications



Western Blot (Cell lysate)

Western blot analysis of Il31 in Raw 264.7 cell lysate with Il31 polyclonal antibody (Cat # PAB13183) at (A) 2.5, (B) 5 and (C) 10 ug/mL .



Immunohistochemistry (Formalin/PFA-fixed paraffin-embedded sections)

Immunohistochemistry of Il31 in rat skeletal muscle tissue with Il31 polyclonal antibody (Cat # PAB13183) at 10 ug/mL .

Specification

Product Description Rabbit polyclonal antibody raised against synthetic peptide of Il31.

Immunogen A synthetic peptide corresponding to N-terminus 16 amino acids of mouse Il31.

Host Rabbit

Reactivity Mouse

Form Liquid

Recommend Usage Western Blot (2.5-5 ug/mL)
The optimal working dilution should be determined by the end user.

Storage Buffer	In PBS (0.02% sodium azide)
Storage Instruction	Store at 4°C for three months. For long term storage store at -20°C. Aliquot to avoid repeated freezing and thawing.
Note	This product contains sodium azide: a POISONOUS AND HAZARDOUS SUBSTANCE which should be handled by trained staff only.

Applications

- Western Blot (Cell lysate)

Western blot analysis of IL31 in Raw 264.7 cell lysate with IL31 polyclonal antibody (Cat # PAB13183) at (A) 2.5, (B) 5 and (C) 10 ug/mL .

- Immunohistochemistry (Formalin/PFA-fixed paraffin-embedded sections)

Immunohistochemistry of IL31 in rat skeletal muscle tissue with IL31 polyclonal antibody (Cat # PAB13183) at 10 ug/mL .

Gene Info — IL31

Entrez GeneID [76399](#)

Protein Accession# [AAS82846](#)

Gene Name IL31

Gene Alias 1700013B14Rik

Gene Description interleukin 31

Gene Ontology [Hyperlink](#)

Other Designations -

Publication Reference

- [IL-31 is associated with cutaneous lymphocyte antigen-positive skin homing T cells in patients with atopic dermatitis.](#)

Bilsborough J, Leung DY, Maurer M, Howell M, Boguniewicz M, Yao L, Storey H, LeCiel C, Harder B, Gross JA.

The Journal of Allergy and Clinical Immunology 2006 Feb; 117(2):418.

- [Predominant expression of the long isoform of GP130-like \(GPL\) receptor is required for interleukin-31 signaling.](#)

Diveu C, Lak-Hal AH, Froger J, Ravon E, Grimaud L, Barbier F, Hermann J, Gascan H, Chevalier S.

Eur Cytokine Netw 2004 Oct; 15(4):291.

- [Interleukin 31, a cytokine produced by activated T cells, induces dermatitis in mice.](#)

Dillon SR, Sprecher C, Hammond A, Bilsborough J, Rosenfeld-Franklin M, Presnell SR, Haugen HS, Maurer M, Harder B, Johnston J, Bort S, Mudri S, Kuijper JL, Bukowski T, Shea P, Dong DL, Dasovich M, Grant FJ, Lockwood L, Levin SD, LeCiel C, Waggle K, Day H, Topouzis S, Kramer J, Kuestner R, Chen Z, Foster D, Parrish-Novak J, Gross JA.

Nature Immunology 2004 Jul; 5(7):752.