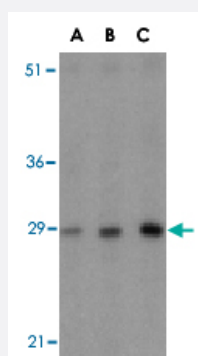


BCAP31 polyclonal antibody

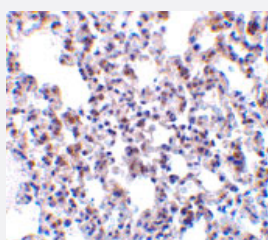
Catalog # PAB13178 Size 100 ug

Applications



Western Blot (Tissue lysate)

Western blot analysis of BCAP31 in rat lung tissue lysate with BCAP31 polyclonal antibody (Cat # PAB13178) at (A) 0.5, (B) 1 and (C) 2 ug/mL .



Immunohistochemistry (Formalin/PFA-fixed paraffin-embedded sections)

Immunohistochemistry of BCAP31 in rat lung tissue with BCAP31 polyclonal antibody (Cat # PAB13178) at 10 ug/mL .

Specification

Product Description	Rabbit polyclonal antibody raised against synthetic peptide of BCAP31.
Immunogen	A synthetic peptide corresponding to internal region 17 amino acids of human BCAP31.
Host	Rabbit
Reactivity	Human, Mouse, Rat
Form	Liquid
Recommend Usage	Western Blot (0.5-1 ug/mL) The optimal working dilution should be determined by the end user.

Storage Buffer	In PBS (0.02% sodium azide)
Storage Instruction	Store at 4°C for three months. For long term storage store at -20°C. Aliquot to avoid repeated freezing and thawing.
Note	This product contains sodium azide: a POISONOUS AND HAZARDOUS SUBSTANCE which should be handled by trained staff only.

Applications

- Western Blot (Tissue lysate)

Western blot analysis of BCAP31 in rat lung tissue lysate with BCAP31 polyclonal antibody (Cat # PAB13178) at (A) 0.5, (B) 1 and (C) 2 ug/mL .

- Immunohistochemistry (Formalin/PFA-fixed paraffin-embedded sections)

Immunohistochemistry of BCAP31 in rat lung tissue with BCAP31 polyclonal antibody (Cat # PAB13178) at 10 ug/mL .

Gene Info — BCAP31

Entrez GeneID	10134
Protein Accession#	NP_005736
Gene Name	BCAP31
Gene Alias	6C6-AG, BAP31, CDM, DXS1357E
Gene Description	B-cell receptor-associated protein 31
Omim ID	300398
Gene Ontology	Hyperlink
Gene Summary	This gene encodes a member of the B-cell receptor associated protein 31 superfamily. The encoded protein is a multi-pass transmembrane protein of the endoplasmic reticulum that is involved in the anterograde transport of membrane proteins from the endoplasmic reticulum to the Golgi and in the caspase 8-mediated apoptosis. Microdeletions in this gene are associated with the contiguous ABCD1/DXS1375E deletion syndrome. Two pseudogenes have been identified on chromosome 16. Alternatively spliced transcript variants encoding distinct isoforms have been described although the biological validity of some of the variants has not been determined. [provided by RefSeq]
Other Designations	6C6 antigen BCR-associated protein Bap31 OTTHUMP00000025977 OTTHUMP00000025978 p28 Bap31

Publication Reference

- [Association of BAP31 with CD11b/CD18. Potential role in intracellular trafficking of CD11b/CD18 in neutrophils.](#)

Zen K, Utech M, Liu Y, Soto I, Nusrat A, Parkos CA.

The Journal of Biological Chemistry 2004 Oct; 279(43):44924.

Application: IEM, IF, WB, Human, Human polymorphonuclear leukocytes

- [p28 Bap31, a Bcl-2/Bcl-XL- and procaspase-8-associated protein in the endoplasmic reticulum.](#)

Ng FW, Nguyen M, Kwan T, Branton PE, Nicholson DW, Cromlish JA, Shore GC.

The Journal of Cell Biology 1997 Oct; 139(2):327.

Application: WB-Tr, Human, KB cells

- [Two new proteins preferentially associated with membrane immunoglobulin D.](#)

Kim KM, Adachi T, Nielsen PJ, Terashima M, Lamers MC, Kohler G, Reth M.

The EMBO Journal 1994 Aug; 13(16):3793.