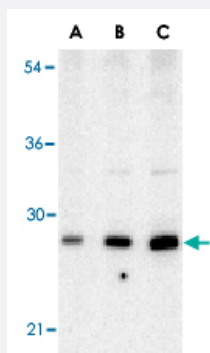


# BCAP29 polyclonal antibody

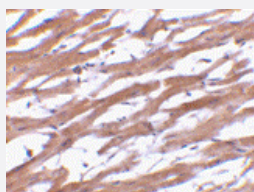
Catalog # PAB13176      Size 100 ug

## Applications



### Western Blot (Tissue lysate)

Western blot analysis of BCAP29 in human heart tissue lysate with BCAP29 polyclonal antibody (Cat # PAB13176) at (A) 0.5, (B) 1 and (C) 2 ug/mL .



### Immunohistochemistry (Formalin/PFA-fixed paraffin-embedded sections)

Immunohistochemistry of BCAP29 in human heart tissue with BCAP29 polyclonal antibody (Cat # PAB13176) at 10 ug/mL .

## Specification

<b>Product Description</b>	Rabbit polyclonal antibody raised against synthetic peptide of BCAP29.
<b>Immunogen</b>	A synthetic peptide corresponding to internal region 17 amino acids of human BCAP29.
<b>Host</b>	Rabbit
<b>Reactivity</b>	Human, Mouse, Rat
<b>Specificity</b>	Bap29 antibody is specific to isoform a of Bap29.
<b>Form</b>	Liquid

<b>Recommend Usage</b>	Western Blot (0.5-1 ug/mL) The optimal working dilution should be determined by the end user.
<b>Storage Buffer</b>	In PBS (0.02% sodium azide)
<b>Storage Instruction</b>	Store at 4°C for three months. For long term storage store at -20°C. Aliquot to avoid repeated freezing and thawing.
<b>Note</b>	This product contains sodium azide: a POISONOUS AND HAZARDOUS SUBSTANCE which should be handled by trained staff only.

## Applications

- Western Blot (Tissue lysate)

Western blot analysis of BCAP29 in human heart tissue lysate with BCAP29 polyclonal antibody (Cat # PAB13176) at (A) 0.5, (B) 1 and (C) 2 ug/mL .

- Immunohistochemistry (Formalin/PFA-fixed paraffin-embedded sections)

Immunohistochemistry of BCAP29 in human heart tissue with BCAP29 polyclonal antibody (Cat # PAB13176) at 10 ug/mL .

## Gene Info — BCAP29

<b>Entrez GeneID</b>	<a href="#">55973</a>
<b>Protein Accession#</b>	<a href="#">NP_001008405</a>
<b>Gene Name</b>	BCAP29
<b>Gene Alias</b>	BAP29, DKFZp686M2086
<b>Gene Description</b>	B-cell receptor-associated protein 29
<b>Gene Ontology</b>	<a href="#">Hyperlink</a>
<b>Other Designations</b>	B-cell receptor-associated protein BAP29

## Publication Reference

- [A high-molecular-weight complex of membrane proteins BAP29/BAP31 is involved in the retention of membrane-bound IgD in the endoplasmic reticulum.](#)

Schamel WW, Kuppig S, Becker B, Gimborn K, Hauri HP, Reth M.

PNAS 2003 Aug; 100(17):9861.

Application: IP-WB, WB-Tr, Mouse, J558L cells

- [p28 Bap31, a Bcl-2/Bcl-XL- and procaspase-8-associated protein in the endoplasmic reticulum.](#)

Ng FW, Nguyen M, Kwan T, Branton PE, Nicholson DW, Cromlish JA, Shore GC.

The Journal of Cell Biology 1997 Oct; 139(2):327.

- [Two new proteins preferentially associated with membrane immunoglobulin D.](#)

Kim KM, Adachi T, Nielsen PJ, Terashima M, Lamers MC, Kohler G, Reth M.

The EMBO Journal 1994 Aug; 13(16):3793.

## Disease

- [Genetic Predisposition to Disease](#)
- [Narcolepsy](#)