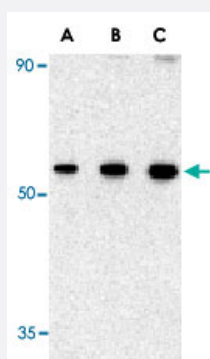


# BECN1 polyclonal antibody

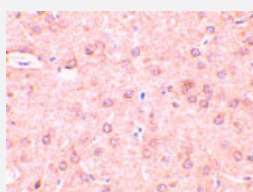
Catalog # PAB13168      Size 100 ug

## Applications



### Western Blot (Cell lysate)

Western blot analysis of BECN1 in 293 cell lysate with BECN1 polyclonal antibody (Cat # PAB13168) at (A) 0.5, (B) 1 and (C) 2 ug/mL .



### Immunohistochemistry (Formalin/PFA-fixed paraffin-embedded sections)

Immunohistochemistry of BECN1 in rat brain tissue with BECN1 polyclonal antibody (Cat # PAB13168) at 2 ug/mL .

## Specification

Product Description	Rabbit polyclonal antibody raised against synthetic peptide of BECN1.
Immunogen	A synthetic peptide corresponding to N-terminus 17 amino acids of human BECN1.
Host	Rabbit
Reactivity	Human, Mouse, Rat
Form	Liquid
Recommend Usage	Western Blot (0.5-1 ug/mL) The optimal working dilution should be determined by the end user.

<b>Storage Buffer</b>	In PBS (0.02% sodium azide)
<b>Storage Instruction</b>	Store at 4°C for up to one year. Aliquot to avoid repeated freezing and thawing.
<b>Note</b>	This product contains sodium azide: a POISONOUS AND HAZARDOUS SUBSTANCE which should be handled by trained staff only.

## Applications

- Western Blot (Cell lysate)

Western blot analysis of BECN1 in 293 cell lysate with BECN1 polyclonal antibody (Cat # PAB13168) at (A) 0.5, (B) 1 and (C) 2 ug/mL .

- Immunohistochemistry (Formalin/PFA-fixed paraffin-embedded sections)

Immunohistochemistry of BECN1 in rat brain tissue with BECN1 polyclonal antibody (Cat # PAB13168) at 2 ug/mL .

## Gene Info — BECN1

<b>Entrez GeneID</b>	<a href="#">8678</a>
<b>Protein Accession#</b>	<a href="#">AAH10276</a>
<b>Gene Name</b>	BECN1
<b>Gene Alias</b>	ATG6, VPS30, beclin1
<b>Gene Description</b>	beclin 1, autophagy related
<b>Omim ID</b>	<a href="#">604378</a>
<b>Gene Ontology</b>	<a href="#">Hyperlink</a>
<b>Gene Summary</b>	O
<b>Other Designations</b>	ATG6 autophagy related 6 homolog beclin 1 beclin 1 (coiled-coil, moesin-like BCL2 interacting protein) beclin 1 (coiled-coil, moesin-like BCL2-interacting protein)

## Publication Reference

- [Autophagy as a cell death and tumor suppressor mechanism.](#)

Gozuacik D, Kimchi A.

Oncogene 2004 Apr; 23(16):2891.

- [Apg14p and Apg6/Vps30p form a protein complex essential for autophagy in the yeast, \*Saccharomyces cerevisiae\*.](#)

Kametaka S, Okano T, Ohsumi M, Ohsumi Y.

The Journal of Biological Chemistry 1998 Aug; 273(35):22284.

Application: WB-CE, WB-Tr, Yeast, Yeast cells

- [Reduced autophagic activity in primary rat hepatocellular carcinoma and ascites hepatoma cells.](#)

Kisen GO, Tessitore L, Costelli P, Gordon PB, Schwarze PE, Baccino FM, Seglen PO.

Carcinogenesis 1993 Dec; 14(12):2501.

## Pathway

- [Regulation of autophagy](#)

## Disease

- [Alzheimer disease](#)
- [Huntington Disease](#)