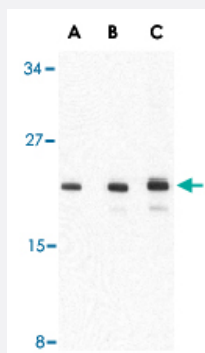


AES polyclonal antibody

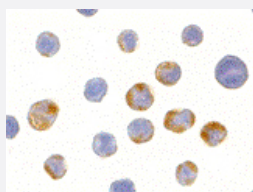
Catalog # PAB13165 Size 100 ug

Applications



Western Blot (Cell lysate)

Western blot analysis of AES in 293 cell lysate with AES polyclonal antibody (Cat # PAB13165) at (A) 1, (B) 2 and (C) 4 ug/mL .



Immunocytochemistry

Immunocytochemistry of AES in HeLa cells with AES polyclonal antibody (Cat # PAB13165) at 10 ug/mL .

Specification

Product Description	Rabbit polyclonal antibody raised against synthetic peptide of AES.
Immunogen	A synthetic peptide corresponding to C-terminus 16 amino acids of human AES.
Host	Rabbit
Reactivity	Human, Mouse, Rat
Form	Liquid
Recommend Usage	Western Blot (1-2 ug/mL) The optimal working dilution should be determined by the end user.

Storage Buffer	In PBS (0.02% sodium azide)
Storage Instruction	Store at 4°C for three months. For long term storage store at -20°C. Aliquot to avoid repeated freezing and thawing.
Note	This product contains sodium azide: a POISONOUS AND HAZARDOUS SUBSTANCE which should be handled by trained staff only.

Applications

- Western Blot (Cell lysate)

Western blot analysis of AES in 293 cell lysate with AES polyclonal antibody (Cat # PAB13165) at (A) 1, (B) 2 and (C) 4 ug/mL .

- Immunocytochemistry

Immunocytochemistry of AES in HeLa cells with AES polyclonal antibody (Cat # PAB13165) at 10 ug/mL .

Gene Info — AES

Entrez GeneID	166
Protein Accession#	NP_945320
Gene Name	AES
Gene Alias	AES-1, AES-2, ESP1, GRG, GRG5, TLE5
Gene Description	amino-terminal enhancer of split
Omim ID	600188
Gene Ontology	Hyperlink
Gene Summary	The protein encoded by this gene is similar in sequence to the amino terminus of Drosophila enhancer of split groucho, a protein involved in neurogenesis during embryonic development. The encoded protein, which belongs to the groucho/TLE family of proteins, can function as a homooligomer or as a heterooligimer with other family members to dominantly repress the expression of other family member genes. Three transcript variants encoding different isoforms have been found for this gene. [provided by RefSeq]
Other Designations	-

Publication Reference

- [Regulation of Bcl-2 proteins during anoikis and amorphosis.](#)

Martin SS, Vuori K.

Biochimica et Biophysica Acta 2004 Jul; 1692(2-3):145.

- [A mitochondrial protein, Bit1, mediates apoptosis regulated by integrins and Groucho/TLE corepressors.](#)

Jan Y, Matter M, Pai JT, Chen YL, Pilch J, Komatsu M, Ong E, Fukuda M, Ruoslahti E.

Cell 2004 Mar; 116(5):751.

- [Groucho/TLE family proteins and transcriptional repression.](#)

Chen G, Courey AJ.

Gene 2000 May; 249(1-2):1.