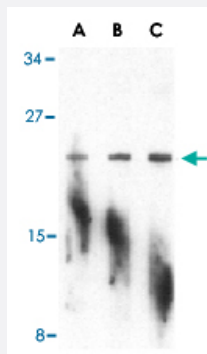


# PTRH2 polyclonal antibody

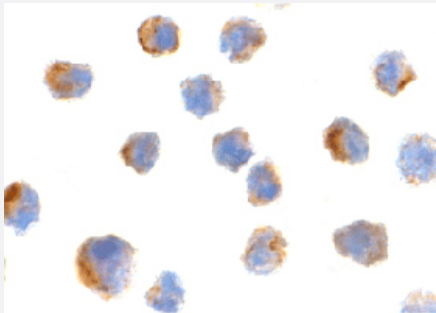
Catalog # PAB13163      Size 100 ug

## Applications



### Western Blot (Cell lysate)

Western blot analysis of PTRH2 in A-20 cell lysate with PTRH2 polyclonal antibody (Cat # PAB13163) at (A) 1, (B) 2, and (C) 4 ug/mL .



### Immunocytochemistry

Immunocytochemistry of PTRH2 in NIH/3T3 cells with PTRH2 polyclonal antibody (Cat # PAB13163) at 2 ug/mL .

## Specification

<b>Product Description</b>	Rabbit polyclonal antibody raised against synthetic peptide of PTRH2.
<b>Immunogen</b>	A synthetic peptide corresponding to N-terminus 15 amino acids of human PTRH2.
<b>Host</b>	Rabbit
<b>Reactivity</b>	Human, Mouse, Rat
<b>Form</b>	Liquid
<b>Recommend Usage</b>	Western Blot (1-2 ug/mL) The optimal working dilution should be determined by the end user.

Storage Buffer	In PBS (0.02% sodium azide)
Storage Instruction	Store at 4°C for three months. For long term storage store at -20°C. Aliquot to avoid repeated freezing and thawing.
Note	This product contains sodium azide: a POISONOUS AND HAZARDOUS SUBSTANCE which should be handled by trained staff only.

## Applications

- Western Blot (Cell lysate)

Western blot analysis of PTRH2 in A-20 cell lysate with PTRH2 polyclonal antibody (Cat # PAB13163) at (A) 1, (B) 2, and (C) 4 ug/mL .

- Immunocytochemistry

Immunocytochemistry of PTRH2 in NIH/3T3 cells with PTRH2 polyclonal antibody (Cat # PAB13163) at 2 ug/mL .

## Gene Info — PTRH2

Entrez GeneID	<a href="#">51651</a>
Protein Accession#	<a href="#">NP_057161</a>
Gene Name	PTRH2
Gene Alias	BIT1, CGI-147, FLJ32471, PTH2
Gene Description	peptidyl-tRNA hydrolase 2
Omim ID	<a href="#">608625</a>
Gene Ontology	<a href="#">Hyperlink</a>
Other Designations	Bcl-2 inhibitor of transcription

## Publication Reference

- [Regulation of Bcl-2 proteins during anoikis and amorphosis.](#)

Martin SS, Vuori K.

Biochimica et Biophysica Acta 2004 Jul; 1692(2-3):145.