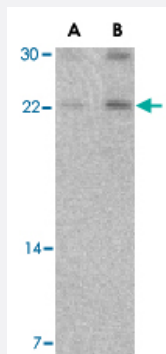


CBLN1 polyclonal antibody

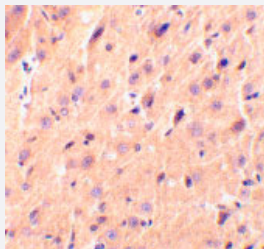
Catalog # PAB13160 Size 100 ug

Applications



Western Blot (Tissue lysate)

Western blot analysis of CBLN1 in mouse cerebellum tissue lysate with CBLN1 polyclonal antibody (Cat # PAB13160) at (A) 2 and (B) 4 ug/mL .



Immunohistochemistry (Formalin/PFA-fixed paraffin-embedded sections)

Immunohistochemical staining of rat brain tissue using CBLN1 polyclonal antibody (Cat # PAB13160) at 2 ug/mL .

Specification

Product Description	Rabbit polyclonal antibody raised against synthetic peptide of CBLN1.
Immunogen	A synthetic peptide corresponding to internal region 15 amino acids of human CBLN1.
Host	Rabbit
Reactivity	Human, Mouse, Rat
Form	Liquid
Recommend Usage	Western Blot (2-4 ug/mL) The optimal working dilution should be determined by the end user.

Storage Buffer	In PBS (0.02% sodium azide)
Storage Instruction	Store at 4°C for three months. For long term storage store at -20°C. Aliquot to avoid repeated freezing and thawing.
Note	This product contains sodium azide: a POISONOUS AND HAZARDOUS SUBSTANCE which should be handled by trained staff only.

Applications

- Western Blot (Tissue lysate)

Western blot analysis of CBLN1 in mouse cerebellum tissue lysate with CBLN1 polyclonal antibody (Cat # PAB13160) at (A) 2 and (B) 4 ug/mL .

- Immunohistochemistry (Formalin/PFA-fixed paraffin-embedded sections)

Immunohistochemical staining of rat brain tissue using CBLN1 polyclonal antibody (Cat # PAB13160) at 2 ug/mL .

Gene Info — CBLN1

Entrez GeneID	869
Protein Accession#	P23435
Gene Name	CBLN1
Gene Alias	-
Gene Description	cerebellin 1 precursor
Omim ID	600432
Gene Ontology	Hyperlink
Gene Summary	This gene encodes a cerebellum-specific precursor protein, precerebellin, with similarity to the globular (non-collagen-like) domain of complement component C1qB. Precerebellin is processed to give rise to several derivatives, including the hexadecapeptide, cerebellin, which is highly enriched in postsynaptic structures of Purkinje cells. Cerebellin has also been found in human and rat adrenals, where it has been shown to enhance the secretory activity of this gland. [provided by RefSeq]
Other Designations	cerebellin 1

Publication Reference

- [Integration of growth factor and nutrient signaling: implications for cancer biology.](#)

Shamji AF, Nghiem P, Schreiber SL.

Molecular Cell 2003 Aug; 12(2):271.

- [Cerebellin stimulates the secretory activity of the rat adrenal gland: in vitro and in vivo studies.](#)

Albertin G, Malendowicz LK, Macchi C, Markowska A, Nussdorfer GG.

Neuropeptides 2000 Feb; 34(1):7.

- [Cerebellin enhances in vitro secretory activity of human adrenal gland.](#)

Mazzocchi G, Andreis PG, De Caro R, Aragona F, Gottardo L, Nussdorfer GG.

The Journal of Clinical Endocrinology and Metabolism 1999 Feb; 84(2):632.

Disease

- [Osteoporosis](#)