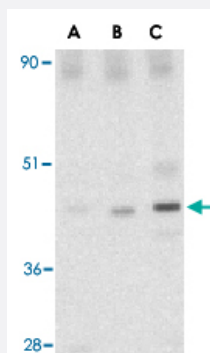


C1QTNF6 polyclonal antibody

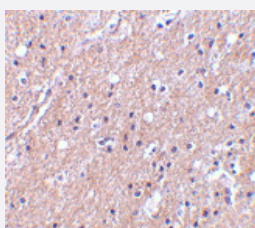
Catalog # PAB13158 Size 100 ug

Applications



Western Blot (Tissue lysate)

Western blot analysis of C1QTNF6 in mouse brain tissue lysate with C1QTNF6 polyclonal antibody (Cat # PAB13158) at (A) 0.5, (B) 1 and (C) 2 ug/mL .



Immunohistochemistry (Formalin/PFA-fixed paraffin-embedded sections)

Immunohistochemistry of C1QTNF6 in human brain tissue with C1QTNF6 polyclonal antibody (Cat # PAB13158) at 10 ug/mL .

Specification

Product Description	Rabbit polyclonal antibody raised against synthetic peptide of C1QTNF6.
Immunogen	A synthetic peptide corresponding to internal region 15 amino acids of human C1QTNF6.
Host	Rabbit
Reactivity	Human, Mouse, Rat
Specificity	CTRP6 antibody is human, mouse and rat reactive.
Form	Liquid

Recommend Usage	Western Blot (1 ug/mL) The optimal working dilution should be determined by the end user.
Storage Buffer	In PBS (0.02% sodium azide)
Storage Instruction	Store at 4°C for three months. For long term storage store at -20°C. Aliquot to avoid repeated freezing and thawing.
Note	This product contains sodium azide: a POISONOUS AND HAZARDOUS SUBSTANCE which should be handled by trained staff only.

Applications

- Western Blot (Tissue lysate)

Western blot analysis of C1QTNF6 in mouse brain tissue lysate with C1QTNF6 polyclonal antibody (Cat # PAB13158) at (A) 0.5, (B) 1 and (C) 2 ug/mL .

- Immunohistochemistry (Formalin/PFA-fixed paraffin-embedded sections)

Immunohistochemistry of C1QTNF6 in human brain tissue with C1QTNF6 polyclonal antibody (Cat # PAB13158) at 10 ug/mL .

Gene Info — C1QTNF6

Entrez GeneID	114904
Protein Accession#	AAQ88740
Gene Name	C1QTNF6
Gene Alias	CTRP6, ZACRP6
Gene Description	C1q and tumor necrosis factor related protein 6
Gene Ontology	Hyperlink
Other Designations	OTTHUMP00000028739 complement-c1q tumor necrosis factor-related protein 6

Publication Reference

- [ACRP30, a new hormone controlling fat and glucose metabolism.](#)

Tsao TS, Lodish HF, Fruebis J.

European Journal of Pharmacology 2002 Apr; 440(2-3):213.

- [Human lactoferrin interacts with soluble CD14 and inhibits expression of endothelial adhesion molecules, E-selectin and ICAM-1, induced by the CD14-lipopolysaccharide complex.](#)

Baveye S, Elaiss E, Fernig DG, Blanquart C, Mazurier J, Legrand D.

Infection and Immunity 2000 Dec; 68(12):6519.

- [The crystal structure of a complement-1q family protein suggests an evolutionary link to tumor necrosis factor.](#)

Shapiro L, Scherer PE.

Current Biology: CB 1998 Mar; 8(6):335.

Disease

- [Autoimmune Diseases](#)
- [Carcinoma](#)
- [Celiac Disease](#)
- [Diabetes Mellitus](#)
- [Genetic Predisposition to Disease](#)
- [Melanoma](#)
- [Prostatic Neoplasms](#)
- [Vitiligo](#)