

C1QTNF4 polyclonal antibody

Catalog # PAB13154

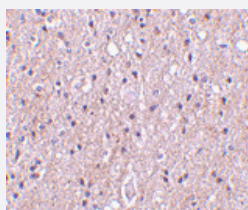
Size 100 ug

Applications



Western Blot (Tissue lysate)

Western blot analysis of C1QTNF4 in rat brain tissue lysate with C1QTNF4 polyclonal antibody (Cat # PAB13154) at (A) 1, (B) 2, and (C) 4 ug/mL .



Immunohistochemistry (Formalin/PFA-fixed paraffin-embedded sections)

Immunohistochemistry of C1QTNF4 in human brain tissue with C1QTNF4 polyclonal antibody (Cat # PAB13154) at 10 ug/mL .

Specification

Product Description

Rabbit polyclonal antibody raised against synthetic peptide of C1QTNF4.

Immunogen

A synthetic peptide corresponding to internal region 16 amino acids of human C1QTNF4.

Host

Rabbit

Reactivity

Human, Mouse, Rat

Specificity

CTRP4 antibody is human, mouse and rat reactive.

Form

Liquid

Recommend Usage	Western Blot (1-2 ug/mL) The optimal working dilution should be determined by the end user.
Storage Buffer	In PBS (0.02% sodium azide)
Storage Instruction	Store at 4°C for three months. For long term storage store at -20°C. Aliquot to avoid repeated freezing and thawing.
Note	This product contains sodium azide: a POISONOUS AND HAZARDOUS SUBSTANCE which should be handled by trained staff only.

Applications

- Western Blot (Tissue lysate)

Western blot analysis of C1QTNF4 in rat brain tissue lysate with C1QTNF4 polyclonal antibody (Cat # PAB13154) at (A) 1, (B) 2, and (C) 4 ug/mL .

- Immunohistochemistry (Formalin/PFA-fixed paraffin-embedded sections)

Immunohistochemistry of C1QTNF4 in human brain tissue with C1QTNF4 polyclonal antibody (Cat # PAB13154) at 10 ug/mL .

Gene Info — C1QTNF4

Entrez GeneID	114900
Protein Accession#	AAH35628
Gene Name	C1QTNF4
Gene Alias	CTRP4, ZACRP4
Gene Description	C1q and tumor necrosis factor related protein 4
Gene Ontology	Hyperlink
Other Designations	complement-c1q tumor necrosis factor-related protein 4

Publication Reference

- [ACRP30, a new hormone controlling fat and glucose metabolism.](#)

Tsao TS, Lodish HF, Fruebis J.

European Journal of Pharmacology 2002 Apr; 440(2-3):213.

- [Human lactoferrin interacts with soluble CD14 and inhibits expression of endothelial adhesion molecules, E-selectin and ICAM-1, induced by the CD14-lipopolysaccharide complex.](#)

Baveye S, Elaiss E, Fernig DG, Blanquart C, Mazurier J, Legrand D.

Infection and Immunity 2000 Dec; 68(12):6519.

- [The crystal structure of a complement-1q family protein suggests an evolutionary link to tumor necrosis factor.](#)

Shapiro L, Scherer PE.

Current Biology: CB 1998 Mar; 8(6):335.