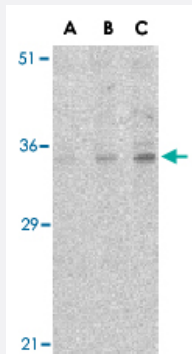


C1QTNF4 polyclonal antibody

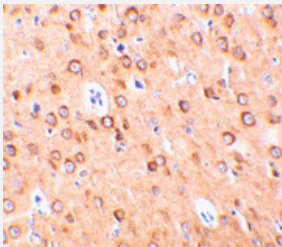
Catalog # PAB13153 Size 100 ug

Applications



Western Blot (Tissue lysate)

Western blot analysis of C1QTNF4 in rat brain tissue lysate with C1QTNF4 polyclonal antibody (Cat # PAB13153) at (A) 1, (B) 2, and (C) 4 ug/mL .



Immunohistochemistry (Formalin/PFA-fixed paraffin-embedded sections)

Immunohistochemistry of C1QTNF4 in rat brain with C1QTNF4 polyclonal antibody (Cat # PAB13153) at 10 ug/mL .

Specification

Product Description	Rabbit polyclonal antibody raised against synthetic peptide of C1QTNF4.
Immunogen	A synthetic peptide corresponding to C-terminus 16 amino acids of human C1QTNF4.
Host	Rabbit
Reactivity	Human, Mouse, Rat
Specificity	CTRP4 antibody is human, mouse and rat reactive.
Form	Liquid

Recommend Usage	Western Blot (1-2 ug/mL) The optimal working dilution should be determined by the end user.
Storage Buffer	In PBS (0.02% sodium azide)
Storage Instruction	Store at 4°C for three months. For long term storage store at -20°C. Aliquot to avoid repeated freezing and thawing.
Note	This product contains sodium azide: a POISONOUS AND HAZARDOUS SUBSTANCE which should be handled by trained staff only.

Applications

- Western Blot (Tissue lysate)

Western blot analysis of C1QTNF4 in rat brain tissue lysate with C1QTNF4 polyclonal antibody (Cat # PAB13153) at (A) 1, (B) 2, and (C) 4 ug/mL .

- Immunohistochemistry (Formalin/PFA-fixed paraffin-embedded sections)

Immunohistochemistry of C1QTNF4 in rat brain with C1QTNF4 polyclonal antibody (Cat # PAB13153) at 10 ug/mL .

Gene Info — C1QTNF4

Entrez GeneID	114900
Protein Accession#	AAH35628
Gene Name	C1QTNF4
Gene Alias	CTRP4, ZACRP4
Gene Description	C1q and tumor necrosis factor related protein 4
Gene Ontology	Hyperlink
Other Designations	complement-c1q tumor necrosis factor-related protein 4

Publication Reference

- [ACRP30, a new hormone controlling fat and glucose metabolism.](#)

Tsao TS, Lodish HF, Fruebis J.

European Journal of Pharmacology 2002 Apr; 440(2-3):213.

- [Human lactoferrin interacts with soluble CD14 and inhibits expression of endothelial adhesion molecules, E-selectin and ICAM-1, induced by the CD14-lipopolysaccharide complex.](#)

Baveye S, Elaiss E, Fernig DG, Blanquart C, Mazurier J, Legrand D.

Infection and Immunity 2000 Dec; 68(12):6519.

- [The crystal structure of a complement-1q family protein suggests an evolutionary link to tumor necrosis factor.](#)

Shapiro L, Scherer PE.

Current Biology: CB 1998 Mar; 8(6):335.