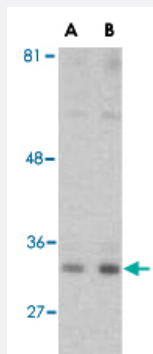


# C1QTNF1 polyclonal antibody

Catalog # PAB13151

Size 100 ug

## Applications



### Western Blot (Cell lysate)

Western blot analysis of C1QTNF1 in MDA-MD-361 cell lysate with C1QTNF1 polyclonal antibody (Cat # PAB13151) at (A) 1 and (B) 2 ug/mL .

## Specification

<b>Product Description</b>	Rabbit polyclonal antibody raised against synthetic peptide of C1QTNF1.
<b>Immunogen</b>	A synthetic peptide corresponding to internal region 16 amino acids of human C1QTNF1.
<b>Host</b>	Rabbit
<b>Reactivity</b>	Human, Mouse
<b>Specificity</b>	Anti-CTRP1 is human and mouse reactive. These proteins are often highly modified post-translationally and migrate in SDS-PAGE at positions other than their predicted size.
<b>Form</b>	Liquid
<b>Recommend Usage</b>	Western Blot (1 ug/mL) The optimal working dilution should be determined by the end user.
<b>Storage Buffer</b>	In PBS (0.02% sodium azide)
<b>Storage Instruction</b>	Store at 4°C for three months. For long term storage store at -20°C. Aliquot to avoid repeated freezing and thawing.

**Note**

This product contains sodium azide: a POISONOUS AND HAZARDOUS SUBSTANCE which should be handled by trained staff only.

## Applications

- Western Blot (Cell lysate)

Western blot analysis of C1QTNF1 in MDA-MD-361 cell lysate with C1QTNF1 polyclonal antibody (Cat # PAB13151) at (A) 1 and (B) 2 ug/mL .

## Gene Info — C1QTNF1

Entrez GeneID	<a href="#">114897</a>
---------------	------------------------

Protein Accession#	<a href="#">NP_940995</a>
--------------------	---------------------------

Gene Name	C1QTNF1
-----------	---------

Gene Alias	CTRP1, FLJ90694, GIP, ZSIG37
------------	------------------------------

Gene Description	C1q and tumor necrosis factor related protein 1
------------------	---

Omim ID	<a href="#">610365</a>
---------	------------------------

Gene Ontology	<a href="#">Hyperlink</a>
---------------	---------------------------

Other Designations	G protein coupled receptor interacting protein
--------------------	--

## Publication Reference

- [ACRP30, a new hormone controlling fat and glucose metabolism.](#)

Tsao TS, Lodish HF, Fruebis J.

European Journal of Pharmacology 2002 Apr; 440(2-3):213.

- [Human lactoferrin interacts with soluble CD14 and inhibits expression of endothelial adhesion molecules, E-selectin and ICAM-1, induced by the CD14-lipopolysaccharide complex.](#)

Baveye S, Elaiss E, Fernig DG, Blanquart C, Mazurier J, Legrand D.

Infection and Immunity 2000 Dec; 68(12):6519.

- [The crystal structure of a complement-1q family protein suggests an evolutionary link to tumor necrosis factor.](#)

Shapiro L, Scherer PE.

Current Biology: CB 1998 Mar; 8(6):335.

## Disease

- [Macular Degeneration](#)