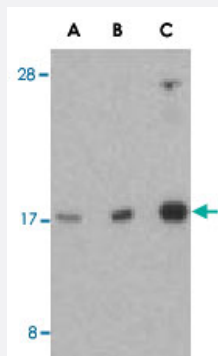


RHEB polyclonal antibody

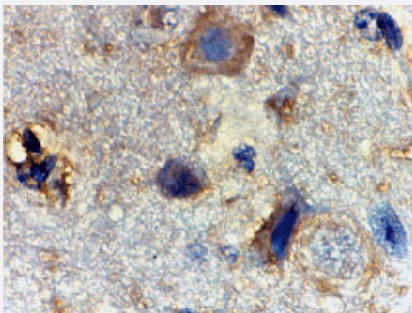
Catalog # PAB13143 Size 100 ug

Applications



Western Blot (Tissue lysate)

Western blot analysis of RHEB in mouse brain tissue lysate with RHEB polyclonal antibody (Cat # PAB13143) at (A) 1, (B) 2, and (C) 4 ug/mL .



Immunohistochemistry (Formalin/PFA-fixed paraffin-embedded sections)

Immunohistochemistry of RHEB in mouse brain tissue with RHEB polyclonal antibody (Cat # PAB13143) at 2 ug/mL .

Specification

Product Description	Rabbit polyclonal antibody raised against synthetic peptide of RHEB.
Immunogen	A synthetic peptide corresponding to internal region 15 amino acids of human RHEB.
Host	Rabbit
Reactivity	Human, Mouse, Rat
Form	Liquid
Recommend Usage	Western Blot (1 ug/mL) The optimal working dilution should be determined by the end user.

Storage Buffer	In PBS (0.02% sodium azide)
Storage Instruction	Store at 4°C for three months. For long term storage store at -20°C. Aliquot to avoid repeated freezing and thawing.
Note	This product contains sodium azide: a POISONOUS AND HAZARDOUS SUBSTANCE which should be handled by trained staff only.

Applications

- Western Blot (Tissue lysate)

Western blot analysis of RHEB in mouse brain tissue lysate with RHEB polyclonal antibody (Cat # PAB13143) at (A) 1, (B) 2, and (C) 4 ug/mL .

- Immunohistochemistry (Formalin/PFA-fixed paraffin-embedded sections)

Immunohistochemistry of RHEB in mouse brain tissue with RHEB polyclonal antibody (Cat # PAB13143) at 2 ug/mL .

Gene Info — RHEB

Entrez GeneID	6009
Protein Accession#	AAH16155
Gene Name	RHEB
Gene Alias	MGC111559, RHEB2
Gene Description	Ras homolog enriched in brain
Omim ID	601293
Gene Ontology	Hyperlink
Gene Summary	This gene is a member of the small GTPase superfamily and encodes a lipid-anchored, cell membrane protein with five repeats of the RAS-related GTP-binding region. This protein is vital in regulation of growth and cell cycle progression due to its role in the insulin/TOR/S6K signaling pathway . The protein has GTPase activity and shuttles between a GDP-bound form and a GTP-bound form, and farnesylation of the protein is required for this activity. Three pseudogenes have been mapped, two on chromosome 10 and one on chromosome 22. [provided by RefSeq]
Other Designations	GTP-binding protein Rheb Ras homolog enriched in brain 2

Publication Reference

- [Rheb GTPase is a direct target of TSC2 GAP activity and regulates mTOR signaling.](#)

Inoki K, Li Y, Xu T, Guan KL.

Genes & Development 2003 Jul; 17(15):1829.

- [Rheb is an essential regulator of S6K in controlling cell growth in Drosophila.](#)

Stocker H, Radimerski T, Schindelholtz B, Wittwer F, Belawat P, Daram P, Breuer S, Thomas G, Hafen E.

Nature Cell Biology 2003 Jun; 5(6):559.

- [rheb, a growth factor- and synaptic activity-regulated gene, encodes a novel Ras-related protein.](#)

Yamagata K, Sanders LK, Kaufmann WE, Yee W, Barnes CA, Nathans D, Worley PF.

The Journal of Biological Chemistry 1994 Jun; 269(23):16333.

Pathway

- [Insulin signaling pathway](#)
- [mTOR signaling pathway](#)

Disease

- [Genetic Predisposition to Disease](#)
- [Urinary Bladder Neoplasms](#)