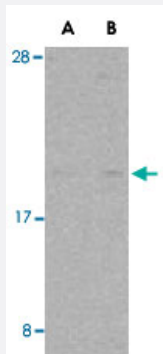


# RHEB polyclonal antibody

Catalog # PAB13142      Size 100 ug

## Applications



### Western Blot (Tissue lysate)

Western blot analysis of RHEB in rat heart tissue lysate with RHEB polyclonal antibody (Cat # PAB13142) at (A) 2 and (B) 4 ug/mL .

## Specification

<b>Product Description</b>	Rabbit polyclonal antibody raised against synthetic peptide of RHEB.
<b>Immunogen</b>	A synthetic peptide corresponding to N-terminus 14 amino acids of human RHEB.
<b>Host</b>	Rabbit
<b>Reactivity</b>	Human, Mouse, Rat
<b>Form</b>	Liquid
<b>Recommend Usage</b>	Western Blot (2-4 ug/mL) The optimal working dilution should be determined by the end user.
<b>Storage Buffer</b>	In PBS (0.02% sodium azide)
<b>Storage Instruction</b>	Store at 4°C for three months. For long term storage store at -20°C. Aliquot to avoid repeated freezing and thawing.
<b>Note</b>	This product contains sodium azide: a POISONOUS AND HAZARDOUS SUBSTANCE which should be handled by trained staff only.

## Applications

- Western Blot (Tissue lysate)

Western blot analysis of RHEB in rat heart tissue lysate with RHEB polyclonal antibody (Cat # PAB13142) at (A) 2 and (B) 4 ug/mL .

## Gene Info — RHEB

Entrez GeneID	<a href="#">6009</a>
Protein Accession#	<a href="#">AAH16155</a>
Gene Name	RHEB
Gene Alias	MGC111559, RHEB2
Gene Description	Ras homolog enriched in brain
Omim ID	<a href="#">601293</a>
Gene Ontology	<a href="#">Hyperlink</a>
Gene Summary	This gene is a member of the small GTPase superfamily and encodes a lipid-anchored, cell membrane protein with five repeats of the RAS-related GTP-binding region. This protein is vital in regulation of growth and cell cycle progression due to its role in the insulin/TOR/S6K signaling pathway . The protein has GTPase activity and shuttles between a GDP-bound form and a GTP-bound form, and farnesylation of the protein is required for this activity. Three pseudogenes have been mapped, two on chromosome 10 and one on chromosome 22. [provided by RefSeq
Other Designations	GTP-binding protein Rheb Ras homolog enriched in brain 2

## Publication Reference

- [Rheb GTPase is a direct target of TSC2 GAP activity and regulates mTOR signaling.](#)

Inoki K, Li Y, Xu T, Guan KL.

Genes & Development 2003 Jul; 17(15):1829.

- [Rheb is an essential regulator of S6K in controlling cell growth in Drosophila.](#)

Stocker H, Radimerski T, Schindelholtz B, Wittwer F, Belawat P, Daram P, Breuer S, Thomas G, Hafen E.

Nature Cell Biology 2003 Jun; 5(6):559.

- [rheb, a growth factor- and synaptic activity-regulated gene, encodes a novel Ras-related protein.](#)

Yamagata K, Sanders LK, Kaufmann WE, Yee W, Barnes CA, Nathans D, Worley PF.

The Journal of Biological Chemistry 1994 Jun; 269(23):16333.

## Pathway

- [Insulin signaling pathway](#)
- [mTOR signaling pathway](#)

## Disease

- [Genetic Predisposition to Disease](#)
- [Urinary Bladder Neoplasms](#)