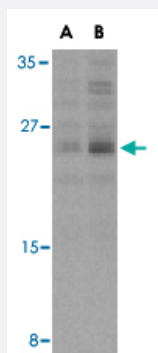


BCL2L11 polyclonal antibody

Catalog # PAB13124

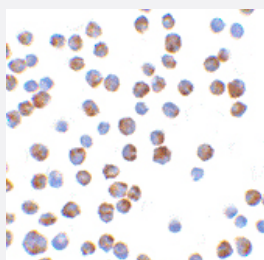
Size 100 ug

Applications



Western Blot (Cell lysate)

Western blot analysis of BCL2L11 in K-562 cell lysates with BCL2L11 polyclonal antibody (Cat # PAB13124) at (A) 2.5 and (B) 5 ug/mL .



Immunocytochemistry

Immunocytochemistry of BCL2L11 in K-562 cells with BCL2L11 polyclonal antibody (Cat # PAB13124) at 10 ug/mL .

Specification

Product Description	Rabbit polyclonal antibody raised against synthetic peptide of BCL2L11.
Immunogen	A synthetic peptide corresponding to internal region of human BCL2L11.
Host	Rabbit
Reactivity	Human, Mouse, Rat
Specificity	The sequence is identical to that of mouse and rat.
Form	Liquid

Recommend Usage	Western Blot (2.5 ug/mL) The optimal working dilution should be determined by the end user.
Storage Buffer	In PBS (0.02% sodium azide)
Storage Instruction	Store at 4°C for three months. For long term storage store at -20°C. Aliquot to avoid repeated freezing and thawing.
Note	This product contains sodium azide: a POISONOUS AND HAZARDOUS SUBSTANCE which should be handled by trained staff only.

Applications

- Western Blot (Cell lysate)

Western blot analysis of BCL2L11 in K-562 cell lysates with BCL2L11 polyclonal antibody (Cat # PAB13124) at (A) 2.5 and (B) 5 ug/mL .

- Immunocytochemistry

Immunocytochemistry of BCL2L11 in K-562 cells with BCL2L11 polyclonal antibody (Cat # PAB13124) at 10 ug/mL .

Gene Info — BCL2L11

Entrez GeneID	10018
Protein Accession#	NP_619527
Gene Name	BCL2L11
Gene Alias	BAM, BIM, BIM-alpha6, BIM-beta6, BIM-beta7, BOD, BimEL, BimL
Gene Description	BCL2-like 11 (apoptosis facilitator)
Omim ID	603827
Gene Ontology	Hyperlink

Gene Summary	The protein encoded by this gene belongs to the BCL-2 protein family. BCL-2 family members form hetero- or homodimers and act as anti- or pro-apoptotic regulators that are involved in a wide variety of cellular activities. The protein encoded by this gene contains a Bcl-2 homology domain 3 (BH3). It has been shown to interact with other members of the BCL-2 protein family, including BCL2, BCL2L1/BCL-X(L), and MCL1, and to act as an apoptotic activator. The expression of this gene can be induced by nerve growth factor (NGF), as well as by the forkhead transcription factor FOXO1, which suggests a role of this gene in neuronal and lymphocyte apoptosis. Transgenic studies of the mouse counterpart suggested that this gene functions as an essential initiator of apoptosis in thymocyte-negative selection. Several alternatively spliced transcript variants of this gene have been identified. [provided by RefSeq]
---------------------	--

Other Designations

BCL2-like 11|bcl-2 interacting mediator of cell death|bcl-2 interacting protein Bim|bcl-2-related ovarian death agonist

Publication Reference

- [BOD \(Bcl-2-related ovarian death gene\) is an ovarian BH3 domain-containing proapoptotic Bcl-2 protein capable of dimerization with diverse antiapoptotic Bcl-2 members.](#)

Hsu SY, Lin P, Hsueh AJ.

Molecular Endocrinology (Baltimore, Md.) 1998 Sep; 12(9):1432.

- [Bim: a novel member of the Bcl-2 family that promotes apoptosis.](#)

O'Connor L, Strasser A, O'Reilly LA, Hausmann G, Adams JM, Cory S, Huang DC.

The EMBO Journal 1998 Jan; 17(2):384.

Disease

- [Adenocarcinoma](#)
- [Disease Progression](#)
- [Genetic Predisposition to Disease](#)
- [Head and Neck Neoplasms](#)
- [Hematologic Diseases](#)
- [Hodgkin Disease](#)
- [Leukemia](#)
- [Lymphatic Metastasis](#)
- [Lymphoma](#)
- [Lymphoproliferative Disorders](#)
- [Neoplasm Recurrence](#)
- [Neoplasms](#)
- [Neovascularization](#)
- [Occupational Diseases](#)

- [Stomach Neoplasms](#)
- [Waldenstrom Macroglobulinemia](#)
- [Werner syndrome](#)