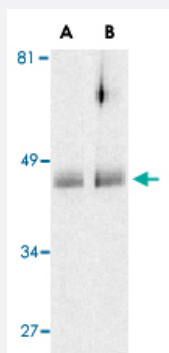


HTRA2 polyclonal antibody

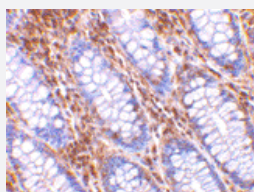
Catalog # PAB13117 Size 100 ug

Applications



Western Blot (Tissue lysate)

Western blot analysis of HTRA2 in human colon cell lysates with HTRA2 polyclonal antibody (Cat # PAB13117) at (A) 0.5 and (B) 1 ug/mL .



Immunohistochemistry (Formalin/PFA-fixed paraffin-embedded sections)

Immunohistochemistry of HTRA2 in human colon tissue with HTRA2 polyclonal antibody (Cat # PAB13117) at 10 ug/mL .

Specification

Product Description	Rabbit polyclonal antibody raised against synthetic peptide of HTRA2.
Immunogen	A synthetic peptide corresponding to C-terminus 15 amino acids of human HTRA2.
Host	Rabbit
Reactivity	Human
Form	Liquid
Recommend Usage	Western Blot (0.5-1 ug/mL) The optimal working dilution should be determined by the end user.

Storage Buffer	In PBS (0.02% sodium azide)
Storage Instruction	Store at 4°C for three months. For long term storage store at -20°C. Aliquot to avoid repeated freezing and thawing.
Note	This product contains sodium azide: a POISONOUS AND HAZARDOUS SUBSTANCE which should be handled by trained staff only.

Applications

- Western Blot (Tissue lysate)

Western blot analysis of HTRA2 in human colon cell lysates with HTRA2 polyclonal antibody (Cat # PAB13117) at (A) 0.5 and (B) 1 ug/mL .

- Immunohistochemistry (Formalin/PFA-fixed paraffin-embedded sections)

Immunohistochemistry of HTRA2 in human colon tissue with HTRA2 polyclonal antibody (Cat # PAB13117) at 10 ug/mL .

Gene Info — HTRA2

Entrez GeneID	27429
Protein Accession#	AAB94569
Gene Name	HTRA2
Gene Alias	OMI, PARK13, PRSS25
Gene Description	HtrA serine peptidase 2
Omim ID	606441 610297
Gene Ontology	Hyperlink
Gene Summary	<p>This gene encodes a serine protease. The protein has been localized in the endoplasmic reticulum and interacts with an alternatively spliced form of mitogen-activated protein kinase 14. The protein has also been localized to the mitochondria with release to the cytosol following apoptotic stimulus. The protein is thought to induce apoptosis by binding the apoptosis inhibitory protein baculoviral IAP repeat-containing 4. Nuclear localization of this protein has also been observed. Alternative splicing of this gene results in two transcript variants encoding different isoforms. Additional transcript variants have been described, but their full-length sequences have not been determined. [provided by RefSeq]</p>
Other Designations	HtrA-like serine protease Omi stress-regulated endoprotease high temperature requirement protein A2 protease, serine, 25

Publication Reference

- [The inhibitors of apoptosis: there is more to life than Bcl2.](#)

Liston P, Fong WG, Korneluk RG.

Oncogene 2003 Nov; 22(53):8568.

Application: WB-Tr, Human, Mammalian cells

- [A serine protease, HtrA2, is released from the mitochondria and interacts with XIAP, inducing cell death.](#)

Suzuki Y, Imai Y, Nakayama H, Takahashi K, Takio K, Takahashi R.

Molecular Cell 2001 Sep; 8(3):613.

Application: IF, WB, Human, HeLa cells

- [An apoptosis-inhibiting baculovirus gene with a zinc finger-like motif.](#)

Crook NE, Clem RJ, Miller LK.

Journal of Virology 1993 Apr; 67(4):2168.

Disease

- [Genetic Predisposition to Disease](#)
- [Parkinson disease](#)
- [Parkinsonian Disorders](#)