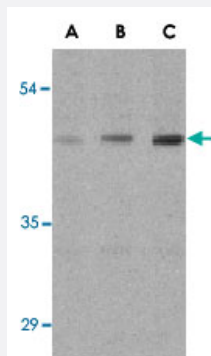


# ANTXR1 polyclonal antibody

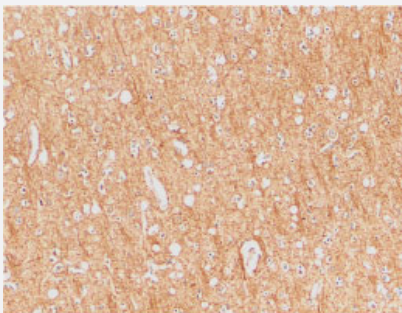
Catalog # PAB13109      Size 100 ug

## Applications



### Western Blot (Cell lysate)

Western blot analysis of ANT XR1 in HepG2 cell lysates with ANT XR1 polyclonal antibody (Cat # PAB13109) at (A) 0.5, (B) 1, and (C) 2 ug/mL .



### Immunohistochemistry (Formalin/PFA-fixed paraffin-embedded sections)

Immunohistochemical staining of human brain tissue using ANT XR1 polyclonal antibody (Cat # PAB13109) at 2 ug/mL .

## Specification

<b>Product Description</b>	Rabbit polyclonal antibody raised against synthetic peptide of ANT XR1.
<b>Immunogen</b>	A synthetic peptide corresponding to internal region 13 amino acids of human ANT XR1.
<b>Host</b>	Rabbit
<b>Reactivity</b>	Human, Mouse, Rat
<b>Specificity</b>	It is human, mouse, and rat reactive. It will recognize all three isoforms.
<b>Form</b>	Liquid

<b>Recommend Usage</b>	Western Blot (0.5-1 ug/mL) The optimal working dilution should be determined by the end user.
<b>Storage Buffer</b>	In PBS (0.02% sodium azide)
<b>Storage Instruction</b>	Store at 4°C for three months. For long term storage store at -20°C. Aliquot to avoid repeated freezing and thawing.
<b>Note</b>	This product contains sodium azide: a POISONOUS AND HAZARDOUS SUBSTANCE which should be handled by trained staff only.

## Applications

- Western Blot (Cell lysate)

Western blot analysis of ANT XR1 in HepG2 cell lysates with ANT XR1 polyclonal antibody (Cat # PAB13109) at (A) 0.5, (B) 1, and (C) 2 ug/mL .

- Immunohistochemistry (Formalin/PFA-fixed paraffin-embedded sections)

Immunohistochemical staining of human brain tissue using ANT XR1 polyclonal antibody (Cat # PAB13109) at 2 ug/mL .

## Gene Info — ANT XR1

<b>Entrez GeneID</b>	<a href="#">84168</a>
<b>Protein Accession#</b>	<a href="#">NP_444262</a>
<b>Gene Name</b>	ANT XR1
<b>Gene Alias</b>	ATR, FLJ10601, FLJ11298, FLJ21776, TEM8
<b>Gene Description</b>	anthrax toxin receptor 1
<b>Omim ID</b>	<a href="#">606410</a>
<b>Gene Ontology</b>	<a href="#">Hyperlink</a>
<b>Gene Summary</b>	This gene encodes a type I transmembrane protein and is a tumor-specific endothelial marker that has been implicated in colorectal cancer. The encoded protein has been shown to also be a docking protein or receptor for Bacillus anthracis toxin, the causative agent of the disease, anthrax. The binding of the protective antigen (PA) component, of the tripartite anthrax toxin, to this receptor protein mediates delivery of toxin components to the cytosol of cells. Once inside the cell, the other two components of anthrax toxin, edema factor (EF) and lethal factor (LF) disrupt normal cellular processes. Three alternatively spliced variants that encode different protein isoforms have been described. [provided by RefSeq]
<b>Other Designations</b>	2310008J16Rik 2810405N18Rik tumor endothelial marker 8