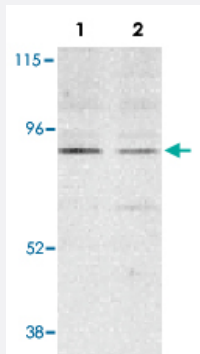


BMF polyclonal antibody

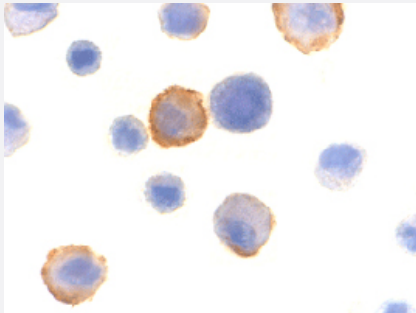
Catalog # PAB13105 Size 100 ug

Applications



Western Blot (Cell lysate)

Western blot analysis of BMF expression in human HepG2 (lane 1) and 293 (lane 2) cell lysates with BMF polyclonal antibody (Cat # PAB13105) at 2 ug /mL .



Immunocytochemistry

Immunocytochemistry of BMF in HeLa cells with BMF polyclonal antibody (Cat # PAB13105) at 10 ug/mL .

Specification

Product Description	Rabbit polyclonal antibody raised against synthetic peptide of BMF.
Immunogen	A synthetic peptide corresponding to N-terminus 15 amino acids of human BMF.
Host	Rabbit
Reactivity	Human, Mouse
Specificity	HepG2 or 293 cell lysate can be used as a positive control and a band at approximately 25 KDa can be detected. It is human and mouse reactive.
Form	Liquid

Recommend Usage	Western Blot (2 ug/mL) The optimal working dilution should be determined by the end user.
Storage Buffer	In PBS (0.02% sodium azide)
Storage Instruction	Store at 4°C for three months. For long term storage store at -20°C. Aliquot to avoid repeated freezing and thawing.
Note	This product contains sodium azide: a POISONOUS AND HAZARDOUS SUBSTANCE which should be handled by trained staff only.

Applications

- Western Blot (Cell lysate)

Western blot analysis of BMF expression in human HepG2 (lane 1) and 293 (lane 2) cell lysates with BMF polyclonal antibody (Cat # PAB13105) at 2 ug /mL .

- Immunocytochemistry

Immunocytochemistry of BMF in HeLa cells with BMF polyclonal antibody (Cat # PAB13105) at 10 ug/mL .

Gene Info — BMF

Entrez GeneID	90427
Protein Accession#	NP_277038
Gene Name	BMF
Gene Alias	FLJ00065
Gene Description	Bcl2 modifying factor
Omim ID	606266
Gene Ontology	Hyperlink
Gene Summary	The protein encoded by this gene belongs to the BCL2 protein family. BCL2 family members form hetero- or homodimers and act as anti- or pro-apoptotic regulators that are involved in a wide variety of cellular activities. This protein contains a single BCL2 homology domain 3 (BH3), and has been shown to bind BCL2 proteins and function as an apoptotic activator. This protein is found to be sequestered to myosin V motors by its association with dynein light chain 2, which may be important for sensing intracellular damage and triggering apoptosis. Alternatively spliced transcript variants encoding different isoforms have been identified. [provided by RefSeq]
Other Designations	-

Publication Reference

- [Bmf: a proapoptotic BH3-only protein regulated by interaction with the myosin V actin motor complex, activated by anoikis.](#)

Puthalakath H, Villunger A, O'Reilly LA, Beaumont JG, Coultas L, Cheney RE, Huang DC, Strasser A.

Science 2001 Sep; 293(5536):1829.

Application: WB-Ce, Human, MCF-7 cells

- [Apoptosis. Till death us do part.](#)

Hunt A, Evan G.

Science 2001 Sep; 293(5536):1784.

Disease

- [Head and Neck Neoplasms](#)
- [Neoplasm Recurrence](#)
- [Neoplasms](#)