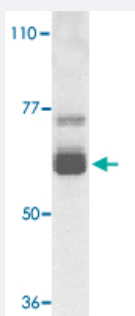


IL22RA1 polyclonal antibody

Catalog # PAB13099

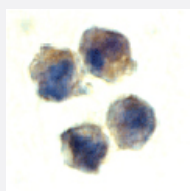
Size 100 ug

Applications



Western Blot (Cell lysate)

Western blot analysis of IL22RA1 expression in human HepG2 cell lysate with IL22RA1 polyclonal antibody (Cat # PAB13099) at 1 ug /mL .



Immunocytochemistry

Immunocytochemistry of IL22RA1 in HepG2 cells with IL22RA1 polyclonal antibody (Cat # PAB13099) at 10 ug/mL .

Specification

Product Description	Rabbit polyclonal antibody raised against synthetic peptide of IL22RA1.
Immunogen	A synthetic peptide corresponding to N-terminus of human IL22RA1.
Host	Rabbit
Reactivity	Human, Rat
Form	Liquid
Recommend Usage	Western Blot (0.5-1 ug/mL) The optimal working dilution should be determined by the end user.

Storage Buffer	In PBS (0.02% sodium azide)
Storage Instruction	Store at 4°C for three months. For long term storage store at -20°C. Aliquot to avoid repeated freezing and thawing.
Note	This product contains sodium azide: a POISONOUS AND HAZARDOUS SUBSTANCE which should be handled by trained staff only.

Applications

- Western Blot (Cell lysate)

Western blot analysis of IL22RA1 expression in human HepG2 cell lysate with IL22RA1 polyclonal antibody (Cat # PAB13099) at 1 ug /mL .

- Immunocytochemistry

Immunocytochemistry of IL22RA1 in HepG2 cells with IL22RA1 polyclonal antibody (Cat # PAB13099) at 10 ug/mL .

Gene Info — IL22RA1

Entrez GeneID	58985
Protein Accession#	AF286095
Gene Name	IL22RA1
Gene Alias	CRF2-9, IL22R, IL22R1
Gene Description	interleukin 22 receptor, alpha 1
Omim ID	605457
Gene Ontology	Hyperlink
Gene Summary	The protein encoded by this gene belongs to the class II cytokine receptor family, and has been shown to be a receptor for interleukin 22 (IL22). IL22 receptor is a protein complex that consists of this protein and interleukin 10 receptor, beta (IL10BR/CRFB4), a subunit also shared by the receptor complex for interleukin 10 (IL10). This gene and interleukin 28 receptor, alpha (IL28RA) form a cytokine receptor gene cluster in the chromosomal region 1p36. [provided by RefSeq]
Other Designations	OTTHUMP00000003073

Publication Reference

- [Identification of the functional interleukin-22 \(IL-22\) receptor complex: the IL-10R2 chain \(IL-10Rbeta \) is a common chain of both the IL-10 and IL-22 \(IL-10-related T cell-derived inducible factor, IL-TIF\) receptor complexes.](#)

Kotenko SV, Izotova LS, Mirochnitchenko OV, Esterova E, Dickensheets H, Donnelly RP, Pestka S.

The Journal of Biological Chemistry 2000 Jan; 276(4):2725.

- [Cloning and characterization of IL-10-related T cell-derived inducible factor \(IL-TIF\), a novel cytokine structurally related to IL-10 and inducible by IL-9.](#)

Dumoutier L, Louahed J, Renault JC.

The Journal of Immunology 2000 Feb; 164(4):1814.

Pathway

- [Cytokine-cytokine receptor interaction](#)
- [Jak-STAT signaling pathway](#)

Disease

- [Celiac Disease](#)
- [Chronic Disease](#)
- [Genetic Predisposition to Disease](#)
- [Rhinitis](#)
- [Sinusitis](#)