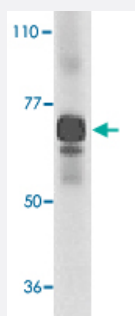


IL27RA polyclonal antibody

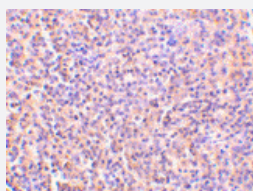
Catalog # PAB13097 Size 100 ug

Applications



Western Blot (Tissue lysate)

Western blot analysis of IL27RA expression in human spleen tissue lysate with IL27RA polyclonal antibody (Cat # PAB13097) at 1 ug /mL .



Immunohistochemistry (Formalin/PFA-fixed paraffin-embedded sections)

Immunohistochemistry of IL27RA in human spleen tissue with IL27RA polyclonal antibody (Cat # PAB13097) at 5 ug/mL .

Specification

Product Description	Rabbit polyclonal antibody raised against synthetic peptide of IL27RA.
Immunogen	A synthetic peptide corresponding to C-terminus of human IL27RA.
Host	Rabbit
Reactivity	Human
Specificity	This sequence is identical to that of mouse TCCR. An approximately 70 KDa band can be detected. It is human, mouse, and rat reactive.
Form	Liquid

Recommend Usage	Western Blot (0.5-1 ug/mL) The optimal working dilution should be determined by the end user.
Storage Buffer	In PBS (0.02% sodium azide)
Storage Instruction	Store at 4°C for three months. For long term storage store at -20°C. Aliquot to avoid repeated freezing and thawing.
Note	This product contains sodium azide: a POISONOUS AND HAZARDOUS SUBSTANCE which should be handled by trained staff only.

Applications

- Western Blot (Tissue lysate)

Western blot analysis of IL27RA expression in human spleen tissue lysate with IL27RA polyclonal antibody (Cat # PAB13097) at 1 ug /mL .

- Immunohistochemistry (Formalin/PFA-fixed paraffin-embedded sections)

Immunohistochemistry of IL27RA in human spleen tissue with IL27RA polyclonal antibody (Cat # PAB13097) at 5 ug/mL .

Gene Info — IL27RA

Entrez GeneID	9466
Protein Accession#	NP_004834
Gene Name	IL27RA
Gene Alias	CRL1, IL27R, TCCR, WSX1, zcytor1
Gene Description	interleukin 27 receptor, alpha
Omim ID	605350
Gene Ontology	Hyperlink
Gene Summary	In mice, CD4+ helper T-cells differentiate into type 1 (Th1) cells, which are critical for cell-mediated immunity, predominantly under the influence of IL12. Also, IL4 influences their differentiation into type 2 (Th2) cells, which are critical for most antibody responses. Mice deficient in these cytokines, their receptors, or associated transcription factors have impaired, but are not absent of, Th1 or Th2 immune responses. This gene encodes a protein which is similar to the mouse T-cell cytokine receptor Tccr at the amino acid level, and is predicted to be a glycosylated transmembrane protein. [provided by RefSeq]
Other Designations	T-cell cytokine receptor type 1 class I cytokine receptor

Publication Reference

- [Development of Th1-type immune responses requires the type I cytokine receptor TCCR.](#)

Chen Q, Ghilardi N, Wang H, Baker T, Xie MH, Gurney A, Grewal IS, de Sauvage FJ.

Nature 2000 Oct; 407(6806):916.

- [Cloning and characterization of a novel class I cytokine receptor.](#)

Sprecher CA, Grant FJ, Baumgartner JW, Presnell SR, Schrader SK, Yamagiwa T, Whitmore TE, O'Hara PJ, Foster DF.

Biochemical and Biophysical Research Communications 1998 May; 246(1):82.

Disease

- [Asthma](#)
- [Bronchiolitis](#)
- [Genetic Predisposition to Disease](#)
- [Infant](#)
- [Respiratory Syncytial Virus Infections](#)