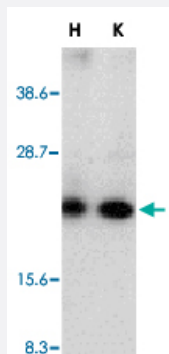


# CRADD polyclonal antibody

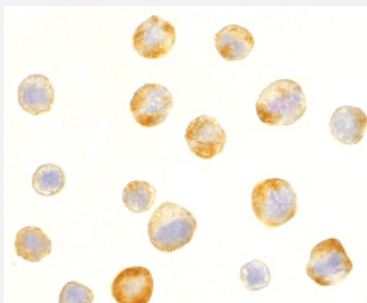
Catalog # PAB13066      Size 100 ug

## Applications



### Western Blot (Cell lysate)

Western blot analysis of CRADD in whole cell lysates from HeLa (H) or K-562 (K) cells with CRADD polyclonal antibody (Cat # PAB13066) at 1 : 500 dilution.



### Immunocytochemistry

Immunocytochemistry of CRADD in HeLa cells with CRADD polyclonal antibody (Cat # PAB13066) at 5 ug/mL .

## Specification

<b>Product Description</b>	Rabbit polyclonal antibody raised against synthetic peptide of CRADD.
<b>Immunogen</b>	A synthetic peptide corresponding to amino acids 99-117 of human CRADD.
<b>Host</b>	Rabbit
<b>Reactivity</b>	Human
<b>Form</b>	Liquid
<b>Recommend Usage</b>	Western Blot (1:500-1:1000) The optimal working dilution should be determined by the end user.

Storage Buffer	In PBS (0.02% sodium azide)
Storage Instruction	Store at 4°C for three months. For long term storage store at -20°C. Aliquot to avoid repeated freezing and thawing.
Note	This product contains sodium azide: a POISONOUS AND HAZARDOUS SUBSTANCE which should be handled by trained staff only.

## Applications

- Western Blot (Cell lysate)

Western blot analysis of CRADD in whole cell lysates from HeLa (H) or K-562 (K) cells with CRADD polyclonal antibody (Cat # PAB13066) at 1 : 500 dilution.

- Immunocytochemistry

Immunocytochemistry of CRADD in HeLa cells with CRADD polyclonal antibody (Cat # PAB13066) at 5 ug/mL .

## Gene Info — CRADD

Entrez GeneID	<a href="#">8738</a>
Protein Accession#	<a href="#">AAB42217</a>
Gene Name	CRADD
Gene Alias	MGC9163, RAIDD
Gene Description	CASP2 and RIPK1 domain containing adaptor with death domain
Omim ID	<a href="#">603454</a>
Gene Ontology	<a href="#">Hyperlink</a>
Gene Summary	The protein encoded by this gene is a death domain (CARD/DD)-containing protein and has been shown to induce cell apoptosis. Through its CARD domain, this protein interacts with, and thus recruits, caspase 2/ICH1 to the cell death signal transduction complex that includes tumor necrosis factor receptor 1 (TNFR1A), RIPK1/RIP kinase, and numbers of other CARD domain-containing proteins. [provided by RefSeq]
Other Designations	RIP-associated ICH1/CED3-homologous protein with death domain RIP-associated protein with a death domain caspase and RIP adaptor with death domain death adaptor molecule RAIDD death domain containing protein CRADD

## Publication Reference

- [The CARD domain: a new apoptotic signalling motif.](#)

Hofmann K, Bucher P, Tschopp J.

Trends in Biochemical Sciences 1997 May; 22(5):155.

- [CRADD, a novel human apoptotic adaptor molecule for caspase-2, and FasL/tumor necrosis factor receptor-interacting protein RIP.](#)

Ahmad M, Srinivasula SM, Wang L, Talanian RV, Litwack G, Fernandes-Alnemri T, Alnemri ES.

Cancer Research 1997 Feb; 57(4):615.

- [RAIDD is a new 'death' adaptor molecule.](#)

Duan H, Dixit VM.

Nature 1997 Jan; 385(6611):86.

Application: WB-Tr, Human, 293 cells

## Disease

- [Diabetes Mellitus](#)
- [Genetic Predisposition to Disease](#)
- [Narcolepsy](#)