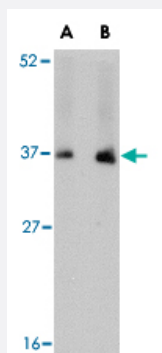


# NENF polyclonal antibody

Catalog # PAB13059

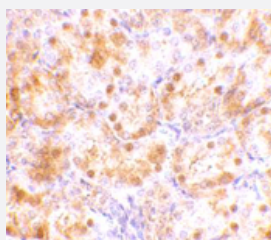
Size 100 ug

## Applications



### Western Blot (Tissue lysate)

Western blot analysis of NENF in human kidney tissue lysate with NENF polyclonal antibody (Cat # PAB13059) at (A) 1 and (B) 2 ug/mL .



### Immunohistochemistry

Immunohistochemical staining of rat kidney tissue with 10 ug/mL NENF polyclonal antibody (Cat # PAB13059).

## Specification

<b>Product Description</b>	Rabbit polyclonal antibody raised against synthetic peptide of NENF.
<b>Immunogen</b>	A synthetic peptide corresponding to C-terminus 15 amino acids of human NENF.
<b>Host</b>	Rabbit
<b>Reactivity</b>	Human, Mouse, Rat
<b>Form</b>	Liquid
<b>Recommend Usage</b>	Western Blot (1-2 ug/mL) The optimal working dilution should be determined by the end user.

<b>Storage Buffer</b>	In PBS (0.02% sodium azide)
<b>Storage Instruction</b>	Store at 4°C for three months. For long term storage store at -20°C. Aliquot to avoid repeated freezing and thawing.
<b>Note</b>	This product contains sodium azide: a POISONOUS AND HAZARDOUS SUBSTANCE which should be handled by trained staff only.

## Applications

- Western Blot (Tissue lysate)

Western blot analysis of NENF in human kidney tissue lysate with NENF polyclonal antibody (Cat # PAB13059) at (A) 1 and (B) 2 ug/mL .

- Immunohistochemistry

Immunohistochemical staining of rat kidney tissue with 10 ug/mL NENF polyclonal antibody (Cat # PAB13059).

## Gene Info — NENF

<b>Entrez GeneID</b>	<a href="#">29937</a>
<b>Protein Accession#</b>	<a href="#">NP_037481</a>
<b>Gene Name</b>	NENF
<b>Gene Alias</b>	CIR2, NEUDESIN, SCIRP10, SPUF
<b>Gene Description</b>	neuron derived neurotrophic factor
<b>Gene Ontology</b>	<a href="#">Hyperlink</a>
<b>Gene Summary</b>	This gene encodes a neurotrophic factor that may play a role in neuron differentiation and development. A pseudogene of this gene is found on chromosome 12. Alternate splicing of this gene results in multiple transcript variants. [provided by RefSeq]
<b>Other Designations</b>	OTTHUMP00000034886 SCIRP10-related protein Spinal cord injury related protein 10 cell growth-inhibiting protein 47 secreted protein of unknown function

## Publication Reference

- [Neudesin, a novel secreted protein with a unique primary structure and neurotrophic activity.](#)

Kimura I, Yoshioka M, Konishi M, Miyake A, Itoh N.

Journal of Neuroscience Research 2005 Feb; 79(3):287.