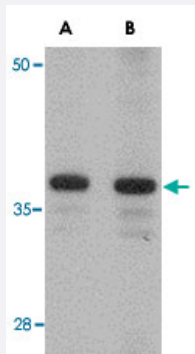


# CDCA8 polyclonal antibody

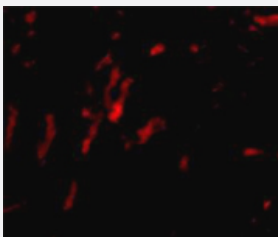
Catalog # PAB13058      Size 100 ug

## Applications



### Western Blot (Tissue lysate)

Western blot analysis of CDCA8 in rat kidney tissue lysate with CDCA8 polyclonal antibody (Cat # PAB13058) at (A) 1 and (B) 2 ug/mL .



### Immunofluorescence

Immunofluorescence staining of rat kidney tissue with 20 ug/mL CDCA8 polyclonal antibody (Cat # PAB13058).

## Specification

<b>Product Description</b>	Rabbit polyclonal antibody raised against synthetic peptide of CDCA8.
<b>Immunogen</b>	A synthetic peptide corresponding to N-terminus 19 amino acids of human CDCA8.
<b>Host</b>	Rabbit
<b>Reactivity</b>	Human, Mouse, Rat
<b>Form</b>	Liquid
<b>Recommend Usage</b>	Western Blot (1 ug/mL) The optimal working dilution should be determined by the end user.

Storage Buffer	In PBS (0.02% sodium azide)
Storage Instruction	Store at 4°C for three months. For long term storage store at -20°C. Aliquot to avoid repeated freezing and thawing.
Note	This product contains sodium azide: a POISONOUS AND HAZARDOUS SUBSTANCE which should be handled by trained staff only.

## Applications

- Western Blot (Tissue lysate)

Western blot analysis of CDCA8 in rat kidney tissue lysate with CDCA8 polyclonal antibody (Cat # PAB13058) at (A) 1 and (B) 2 ug/mL .

- Immunofluorescence

Immunofluorescence staining of rat kidney tissue with 20 ug/mL CDCA8 polyclonal antibody (Cat # PAB13058).

## Gene Info — CDCA8

Entrez GeneID	<a href="#">55143</a>
Protein Accession#	<a href="#">NP_060571</a>
Gene Name	CDCA8
Gene Alias	BOR, BOREALIN, FLJ10468, FLJ12042
Gene Description	cell division cycle associated 8
Omim ID	<a href="#">609977</a>
Gene Ontology	<a href="#">Hyperlink</a>
Gene Summary	CDCA8 is a component of a chromosomal passenger complex required for stability of the bipolar mitotic spindle (Gassmann et al., 2004 [PubMed 15249581]).[supplied by OMIM]
Other Designations	Dasra B OTTHUMP00000004514 OTTHUMP00000004515

## Publication Reference

- [Borealin is repressed in response to p53/Rb signaling.](#)

Date DA, Jacob CJ, Bekier ME, Stiff AC, Jackson MW, Taylor WR.

Cell Biology International 2007 Dec; 31(12):1470.

Application: IF, IHC-P, Human, Human tissue array

- [Loss of Drosophila borealin causes polyploidy, delayed apoptosis and abnormal tissue development.](#)

Hanson KK, Kelley AC, Bienz M.

Development 2005 Nov; 132(21):4777.

- [Borealin: a novel chromosomal passenger required for stability of the bipolar mitotic spindle.](#)

Gassmann R, Carvalho A, Henzing AJ, Ruchaud S, Hudson DF, Honda R, Nigg EA, Gerloff DL, Earnshaw WC.

The Journal of Cell Biology 2004 Jul; 166(2):179.

Application: IP, WB, Human, HeLa cells