

MED28 polyclonal antibody

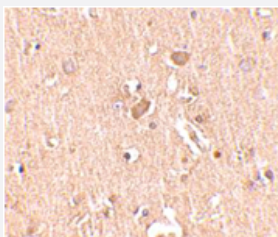
Catalog # PAB13054 Size 100 ug

Applications



Western Blot (Tissue lysate)

Western blot analysis of MED28 in human brain tissue lysate with MED28 polyclonal antibody (Cat # PAB13054) at 1 ug/mL in (A) the absence and (B) the presence of blocking peptide.



Immunohistochemistry

Immunohistochemical staining of human brain tissue with 2.5 ug/mL MED28 polyclonal antibody (Cat # PAB13054).

Specification

Product Description	Rabbit polyclonal antibody raised against synthetic peptide of MED28.
Immunogen	A synthetic peptide corresponding to internal region 17 amino acids of human MED28.
Host	Rabbit
Reactivity	Human, Mouse
Form	Liquid
Recommend Usage	Western Blot (0.5-1 ug/mL) The optimal working dilution should be determined by the end user.

Storage Buffer	In PBS (0.02% sodium azide)
Storage Instruction	Store at 4°C for three months. For long term storage store at -20°C. Aliquot to avoid repeated freezing and thawing.
Note	This product contains sodium azide: a POISONOUS AND HAZARDOUS SUBSTANCE which should be handled by trained staff only.

Applications

- Western Blot (Tissue lysate)

Western blot analysis of MED28 in human brain tissue lysate with MED28 polyclonal antibody (Cat # PAB13054) at 1 ug/mL in (A) the absence and (B) the presence of blocking peptide.

- Immunohistochemistry

Immunohistochemical staining of human brain tissue with 2.5 ug/mL MED28 polyclonal antibody (Cat # PAB13054).

Gene Info — MED28

Entrez GeneID	80306
Protein Accession#	NP_079481
Gene Name	MED28
Gene Alias	1500003D12Rik, DKFZp434N185, EG1, magicin
Gene Description	mediator complex subunit 28
Omim ID	610311
Gene Ontology	Hyperlink
Gene Summary	subunit 28 homolog
Other Designations	endothelial-derived gene 1 mediator of RNA polymerase II transcription, subunit 28 homolog

Publication Reference

- [Identification of host proteins required for HIV infection through a functional genomic screen.](#)

Brass AL, Dykxhoorn DM, Benita Y, Yan N, Engelman A, Xavier RJ, Lieberman J, Elledge SJ.

Science 2008 Jan; 319(5865):921.

- [Mediator subunit MED28 \(Magicin\) is a repressor of smooth muscle cell differentiation.](#)

Beyer KS, Beauchamp RL, Lee MF, Gusella JF, Näär AM, Ramesh V.

The Journal of Biological Chemistry 2007 Nov; 282(44):32152.

Application: WB-Tr, Mouse, C2C12, NIH3T3 cells

- [A set of consensus mammalian mediator subunits identified by multidimensional protein identification technology.](#)

Sato S, Tomomori-Sato C, Parmely TJ, Florens L, Zybaylov B, Swanson SK, Banks CA, Jin J, Cai Y, Washburn MP, Conaway JW, Conaway RC.

Molecular Cell 2004 Jun; 14(5):685.

Disease

- [Disease Progression](#)
- [Disease Susceptibility](#)
- [HIV Infections](#)