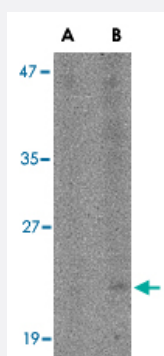


# BST2 polyclonal antibody

Catalog # PAB13047      Size 100 ug

## Applications



### Western Blot (Cell lysate)

Western blot analysis of BST2 in Daudi cell lysate with BST2 polyclonal antibody (Cat # PAB13047) at (A) 1 and (B) 2 ug/mL .

## Specification

<b>Product Description</b>	Rabbit polyclonal antibody raised against synthetic peptide of BST2.
<b>Immunogen</b>	A synthetic peptide corresponding to C-terminus 16 amino acids of human BST2.
<b>Host</b>	Rabbit
<b>Reactivity</b>	Human, Mouse
<b>Form</b>	Liquid
<b>Recommend Usage</b>	Western Blot (1-2 ug/mL) The optimal working dilution should be determined by the end user.
<b>Storage Buffer</b>	In PBS (0.02% sodium azide)
<b>Storage Instruction</b>	Store at 4°C for three months. For long term storage store at -20°C. Aliquot to avoid repeated freezing and thawing.
<b>Note</b>	This product contains sodium azide: a POISONOUS AND HAZARDOUS SUBSTANCE which should be handled by trained staff only.

## Applications

- Western Blot (Cell lysate)

Western blot analysis of BST2 in Daudi cell lysate with BST2 polyclonal antibody (Cat # PAB13047) at (A) 1 and (B) 2 ug/mL .

## Gene Info — BST2

Entrez GeneID	<a href="#">684</a>
Protein Accession#	<a href="#">AAH87949</a>
Gene Name	BST2
Gene Alias	CD317
Gene Description	bone marrow stromal cell antigen 2
Omim ID	<a href="#">600534</a>
Gene Ontology	<a href="#">Hyperlink</a>
Gene Summary	Bone marrow stromal cells are involved in the growth and development of B-cells. The specific function of the protein encoded by the bone marrow stromal cell antigen 2 is undetermined; however, this protein may play a role in pre-B-cell growth and in rheumatoid arthritis. [provided by RefSeq]
Other Designations	tetherin

## Publication Reference

- [A single nucleotide polymorphism in tetherin promotes retrovirus restriction in vivo.](#)

Barrett BS, Smith DS, Li SX, Guo K, Hasenkrug KJ, Santiago ML.

PLoS Pathogens 2012 Mar; 8(3):e1002596.

Application: Flow Cyt, Mouse, Splenocytes

- [Tetherin inhibits retrovirus release and is antagonized by HIV-1 Vpu.](#)

Neil SJ, Zang T, Bieniasz PD.

Nature 2008 Jan; 451(7177):425.

- [Molecular cloning and chromosomal mapping of a bone marrow stromal cell surface gene, BST2, that may be involved in pre-B-cell growth.](#)

Ishikawa J, Kaisho T, Tomizawa H, Lee BO, Kobune Y, Inazawa J, Oritani K, Itoh M, Ochi T, Ishihara K, et al..

Genomics 1995 Apr; 26(3):527.

Application: Flow Cyt, IP, Human, HEK 293T cells, MMSV3-3, NFSV1-1, NIH/3T3, RASV55, SynSV6-14 cells

## Disease

- [Genetic Predisposition to Disease](#)
- [Ovarian Neoplasms](#)