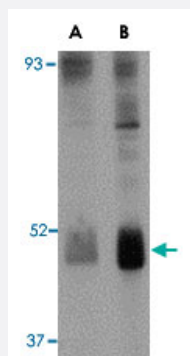


# WNT10B polyclonal antibody

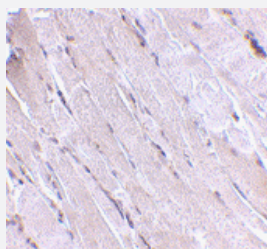
Catalog # PAB13039      Size 100 ug

## Applications



### Western Blot (Tissue lysate)

Western blot analysis of WNT10B in human skeletal muscle tissue lysate with WNT10B polyclonal antibody (Cat # PAB13039) at (A) 2 and (B) 4 ug/mL .



### Immunohistochemistry (Formalin/PFA-fixed paraffin-embedded sections)

Immunohistochemistry of WNT10B in human skeletal muscle with WNT10B polyclonal antibody (Cat # PAB13039) at 2.5 ug/mL .

## Specification

<b>Product Description</b>	Rabbit polyclonal antibody raised against synthetic peptide of WNT10B.
<b>Immunogen</b>	A synthetic peptide corresponding to internal region 15 amino acids of human WNT10B.
<b>Host</b>	Rabbit
<b>Reactivity</b>	Human, Mouse, Rat
<b>Form</b>	Liquid
<b>Recommend Usage</b>	Western Blot (2-4 ug/mL) The optimal working dilution should be determined by the end user.

Storage Buffer	In PBS (0.02% sodium azide)
Storage Instruction	Store at 4°C for three months. For long term storage store at -20°C. Aliquot to avoid repeated freezing and thawing.
Note	This product contains sodium azide: a POISONOUS AND HAZARDOUS SUBSTANCE which should be handled by trained staff only.

## Applications

- Western Blot (Tissue lysate)

Western blot analysis of WNT10B in human skeletal muscle tissue lysate with WNT10B polyclonal antibody (Cat # PAB13039) at (A) 2 and (B) 4 ug/mL .

- Immunohistochemistry (Formalin/PFA-fixed paraffin-embedded sections)

Immunohistochemistry of WNT10B in human skeletal muscle with WNT10B polyclonal antibody (Cat # PAB13039) at 2.5 ug/mL .

## Gene Info — WNT10B

Entrez GeneID	<a href="#">7480</a>
Protein Accession#	<a href="#">NP_003385</a>
Gene Name	WNT10B
Gene Alias	SHFM6, WNT-12
Gene Description	wingless-type MMTV integration site family, member 10B
Omim ID	<a href="#">601906</a>
Gene Ontology	<a href="#">Hyperlink</a>
Gene Summary	The WNT gene family consists of structurally related genes which encode secreted signaling proteins. These proteins have been implicated in oncogenesis and in several developmental processes, including regulation of cell fate and patterning during embryogenesis. This gene is a member of the WNT gene family. It may be involved in breast cancer, and its protein signaling is likely a molecular switch that governs adipogenesis. This protein is 96% identical to the mouse Wnt10b protein at the amino acid level. This gene is clustered with another family member, WNT1, in the chromosome 12q13 region. [provided by RefSeq]
Other Designations	WNT-10B protein

## Publication Reference

- [Role of Wnt10b and C/EBPalpha in spontaneous adipogenesis of 243 cells.](#)

Bennett CN, Hodge CL, MacDougald OA, Schwartz J.

Biochemical and Biophysical Research Communications 2003 Feb; 302(1):12.

- [A novel human Wnt gene, WNT10B, maps to 12q13 and is expressed in human breast carcinomas.](#)

Bui TD, Rankin J, Smith K, Huguet EL, Ruben S, Strachan T, Harris AL, Lindsay S.

Oncogene 1997 Mar; 14(10):1249.

- [Insertional mutagenesis identifies a member of the Wnt gene family as a candidate oncogene in the mammary epithelium of int-2/Fgf-3 transgenic mice.](#)

Lee FS, Lane TF, Kuo A, Shackleford GM, Leder P.

PNAS 1995 Mar; 92(6):2268.

Application: WB-Ti, Mouse, Mouse mammary epithelium

## Pathway

- [Basal cell carcinoma](#)
- [Hedgehog signaling pathway](#)
- [Melanogenesis](#)
- [Pathways in cancer](#)
- [Wnt signaling pathway](#)

## Disease

- [Amyotrophic lateral sclerosis](#)
- [Anoxia](#)
- [Cardiovascular Diseases](#)
- [Diabetes Mellitus](#)
- [Edema](#)

- [Fractures](#)
- [Genetic Predisposition to Disease](#)
- [Hip Fractures](#)
- [Osteoporosis](#)
- [Ovarian Neoplasms](#)
- [Spinal Fractures](#)