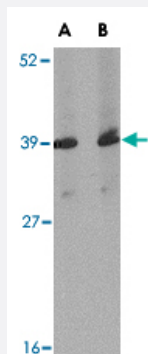


Apba1 polyclonal antibody

Catalog # PAB13038 Size 100 ug

Applications



Western Blot (Tissue lysate)

Western blot analysis of Apba1 in mouse spleen tissue lysate with Apba1 polyclonal antibody (Cat # PAB13038) at (A) 1 and (B) 2 ug/mL .

Specification

Product Description	Rabbit polyclonal antibody raised against synthetic peptide of Apba1.
Immunogen	A synthetic peptide corresponding to internal region 12 amino acids of mouse Apba1.
Host	Rabbit
Reactivity	Human, Mouse, Rat
Form	Liquid
Recommend Usage	Western Blot (1-2 ug/mL) The optimal working dilution should be determined by the end user.
Storage Buffer	In PBS (0.02% sodium azide)
Storage Instruction	Store at 4°C for three months. For long term storage store at -20°C. Aliquot to avoid repeated freezing and thawing.
Note	This product contains sodium azide: a POISONOUS AND HAZARDOUS SUBSTANCE which should be handled by trained staff only.

Applications

- Western Blot (Tissue lysate)

Western blot analysis of Apba1 in mouse spleen tissue lysate with Apba1 polyclonal antibody (Cat # PAB13038) at (A) 1 and (B) 2 ug/mL .

Gene Info — Apba1

Entrez GeneID	319924
Protein Accession#	CAD90042
Gene Name	Apba1
Gene Alias	6430513E09Rik, Lin-10, Mint, Mint1, Urop11, X11, X11alpha
Gene Description	amyloid beta (A4) precursor protein binding, family A, member 1
Gene Ontology	Hyperlink
Gene Summary	family A
Other Designations	UROP11-110 amyloid beta (A4) precursor protein binding, family A, member 1

Publication Reference

- [Identification of Urop11, a novel leptin-modulated gene that is upregulated in the hypothalamus of mice with virus-induced obesity.](#)

Verlaeten O, Casery C, Cavagna S, Naville D, Giraudon P, Belin MF, Begeot M, Bernard A.

Journal of Molecular Endocrinology 2007 Feb; 38(1-2):3.