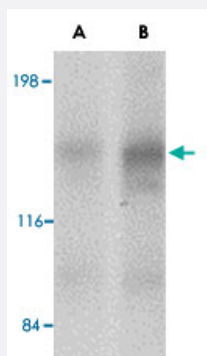


CADPS2 polyclonal antibody

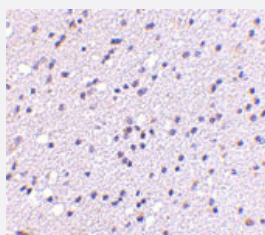
Catalog # PAB13030 Size 100 ug

Applications



Western Blot (Tissue lysate)

Western blot analysis of CADPS2 in human brain tissue lysate with CADPS2 polyclonal antibody (Cat # PAB13030) at (A) 0.5 and (B) 1 ug/mL .



Immunohistochemistry (Formalin/PFA-fixed paraffin-embedded sections)

Immunohistochemistry of CADPS2 in human brain with CADPS2 polyclonal antibody (Cat # PAB13030) at 5 ug/mL .

Specification

| | |
|----------------------------|--|
| Product Description | Rabbit polyclonal antibody raised against synthetic peptide of CADPS2. |
| Immunogen | A synthetic peptide corresponding to internal region 19 amino acids of human CADPS2. |
| Host | Rabbit |
| Reactivity | Human, Mouse, Rat |
| Form | Liquid |
| Recommend Usage | Western Blot (0.5-1 ug/mL) The optimal working dilution should be determined by the end user. |

| | |
|---------------------|---|
| Storage Buffer | In PBS (0.02% sodium azide) |
| Storage Instruction | Store at 4°C for three months. For long term storage store at -20°C. Aliquot to avoid repeated freezing and thawing. |
| Note | This product contains sodium azide: a POISONOUS AND HAZARDOUS SUBSTANCE which should be handled by trained staff only. |

Applications

- Western Blot (Tissue lysate)

Western blot analysis of CADPS2 in human brain tissue lysate with CADPS2 polyclonal antibody (Cat # PAB13030) at (A) 0.5 and (B) 1 ug/mL .

- Immunohistochemistry (Formalin/PFA-fixed paraffin-embedded sections)

Immunohistochemistry of CADPS2 in human brain with CADPS2 polyclonal antibody (Cat # PAB13030) at 5 ug/mL .

Gene Info — CADPS2

| | |
|--------------------|---|
| Entrez GeneID | 93664 |
| Protein Accession# | NP_060424 |
| Gene Name | CADPS2 |
| Gene Alias | FLJ40851, KIAA1591 |
| Gene Description | Ca ⁺⁺ -dependent secretion activator 2 |
| Omim ID | 609978 |
| Gene Ontology | Hyperlink |
| Other Designations | Ca ⁺⁺ -dependent activator protein for secretion 2 Ca ²⁺ -dependent activator protein for secretion 2 |

Publication Reference

- [CAPS-1 and CAPS-2 are essential synaptic vesicle priming proteins.](#)

Jockusch WJ, Speidel D, Sigler A, Sorensen JB, Varoqueaux F, Rhee JS, Brose N.

Cell 2007 Nov; 131(4):796.

Application: WB-Ti, Mouse, Mouse brain

- [Alternative splicing variations in mouse CAPS2: differential expression and functional properties of splicing variants.](#)

Sadakata T, Washida M, Furuichi T.

BMC Neuroscience 2007 Apr; 8:25.

Application: WB, Mouse, Mouse cerebella

- [A novel 145 kd brain cytosolic protein reconstitutes Ca\(2+\)-regulated secretion in permeable neuroendocrine cells.](#)

Walent JH, Porter BW, Martin TF.

Cell 1992 Sep; 70(5):765.

Disease

- [Alzheimer Disease](#)
- [Attention Deficit Disorder with Hyperactivity](#)
- [Autistic Disorder](#)
- [Cognition Disorders](#)
- [NARP](#)
- [Tobacco Use Disorder](#)