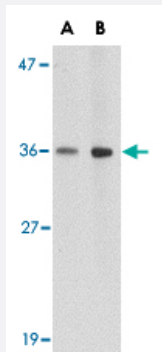


HAPLN2 polyclonal antibody

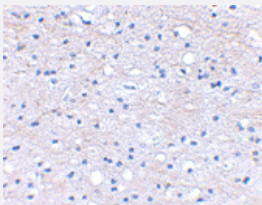
Catalog # PAB13027 Size 100 ug

Applications



Western Blot (Tissue lysate)

Western blot analysis of HAPLN2 in human brain tissue lysate with HAPLN2 polyclonal antibody (Cat # PAB13027) at (A) 1 and (B) 2 ug/mL .



Immunohistochemistry (Formalin/PFA-fixed paraffin-embedded sections)

Immunohistochemical staining of human brain tissue using HAPLN2 polyclonal antibody (Cat # PAB13027) at 2.5 ug/mL .

Specification

Product Description	Rabbit polyclonal antibody raised against synthetic peptide of HAPLN2.
Immunogen	A synthetic peptide corresponding to internal region 12 amino acids of human HAPLN2.
Host	Rabbit
Reactivity	Human, Mouse, Rat
Form	Liquid
Recommend Usage	Western Blot (1-2 ug/mL) The optimal working dilution should be determined by the end user.

Storage Buffer	In PBS (0.02% sodium azide)
Storage Instruction	Store at 4°C for three months. For long term storage store at -20°C. Aliquot to avoid repeated freezing and thawing.
Note	This product contains sodium azide: a POISONOUS AND HAZARDOUS SUBSTANCE which should be handled by trained staff only.

Applications

- Western Blot (Tissue lysate)

Western blot analysis of HAPLN2 in human brain tissue lysate with HAPLN2 polyclonal antibody (Cat # PAB13027) at (A) 1 and (B) 2 ug/mL .

- Immunohistochemistry (Formalin/PFA-fixed paraffin-embedded sections)

Immunohistochemical staining of human brain tissue using HAPLN2 polyclonal antibody (Cat # PAB13027) at 2.5 ug/mL .

Gene Info — HAPLN2

Entrez GeneID	60484
---------------	-----------------------

Protein Accession#	NP_068589
--------------------	---------------------------

Gene Name	HAPLN2
-----------	--------

Gene Alias	BRAL1
------------	-------

Gene Description	hyaluronan and proteoglycan link protein 2
------------------	--------------------------------------------

Gene Ontology	Hyperlink
---------------	---------------------------

Other Designations	OTTHUMP00000031987 brain link protein-1
--------------------	-----------------------------------------

Publication Reference

- [Reduced length of nodes of Ranvier and altered proteoglycan immunoreactivity in prefrontal white matter in major depressive disorder and chronically stressed rats.](#)

José Javier Miguel-Hidalgo, Erik Hearn, Mohadetheh Moulana, Khunsa Saleem, Austin Clark, Maggie Holmes, Kashish Wadhwa, Isabella Kelly, Craig Allen Stockmeier, Grazyna Rajkowska.

Scientific Reports 2023 Sep; 13(1):16419.

Application: IHC, WB, Human, Rat, Brain

- [A hyaluronan binding link protein gene family whose members are physically linked adjacent to chondroitin sulfate proteoglycan core protein genes: the missing links.](#)

Spicer AP, Joo A, Bowling RA Jr.

The Journal of Biological Chemistry 2003 Mar; 278(23):21083.

- [Bral1, a brain-specific link protein, colocalizing with the versican V2 isoform at the nodes of Ranvier in developing and adult mouse central nervous systems.](#)

Oohashi T, Hirakawa S, Bekku Y, Rauch U, Zimmermann DR, Su WD, Ohtsuka A, Murakami T, Ninomiya Y.

Molecular and Cellular Neurosciences 2002 Jan; 19(1):43.

Application: IF, IHC-Fr, WB-Tr, Human, Mouse, Rat, 293-EBNA cells, Mouse cerebellum, Rat optic nerve

- [The brain link protein-1 \(BRAL1\): cDNA cloning, genomic structure, and characterization as a novel link protein expressed in adult brain.](#)

Hirakawa S, Oohashi T, Su WD, Yoshioka H, Murakami T, Arata J, Ninomiya Y.

Biochemical and Biophysical Research Communications 2000 Oct; 276(3):982.