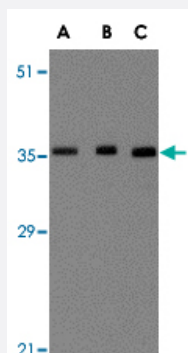


# BRCC3 polyclonal antibody

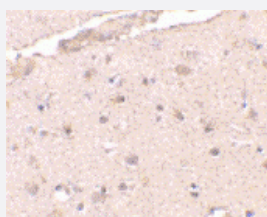
Catalog # PAB13012      Size 100 ug

## Applications



### Western Blot (Cell lysate)

Western blot analysis of BRCC3 in MCF-7 cell lysate with BRCC3 polyclonal antibody (Cat # PAB13012) at (A) 0.5, (B) 1 and (C) 2 ug/mL .



### Immunohistochemistry (Formalin/PFA-fixed paraffin-embedded sections)

Immunohistochemistry of BRCC3 in human brain tissue with BRCC3 polyclonal antibody (Cat # PAB13012) at 2.5 ug/mL .

## Specification

**Product Description** Rabbit polyclonal antibody raised against synthetic peptide of BRCC3.

**Immunogen** A synthetic peptide corresponding to N-terminus 18 amino acids of human BRCC3.

**Host** Rabbit

**Reactivity** Human, Mouse, Rat

**Form** Liquid

**Recommend Usage** Western Blot (0.5-1 ug/mL)  
The optimal working dilution should be determined by the end user.

Storage Buffer	In PBS (0.02% sodium azide)
Storage Instruction	Store at 4°C for three months. For long term storage store at -20°C. Aliquot to avoid repeated freezing and thawing.
Note	This product contains sodium azide: a POISONOUS AND HAZARDOUS SUBSTANCE which should be handled by trained staff only.

## Applications

- Western Blot (Cell lysate)

Western blot analysis of BRCC3 in MCF-7 cell lysate with BRCC3 polyclonal antibody (Cat # PAB13012) at (A) 0.5, (B) 1 and (C) 2 ug/mL .

- Immunohistochemistry (Formalin/PFA-fixed paraffin-embedded sections)

Immunohistochemistry of BRCC3 in human brain tissue with BRCC3 polyclonal antibody (Cat # PAB13012) at 2.5 ug/mL .

## Gene Info — BRCC3

Entrez GeneID	<a href="#">79184</a>
Protein Accession#	<a href="#">NP_077308</a>
Gene Name	BRCC3
Gene Alias	BRCC36, C6.1A, CXorf53
Gene Description	BRCA1/BRCA2-containing complex, subunit 3
Omim ID	<a href="#">300617</a>
Gene Ontology	<a href="#">Hyperlink</a>
Gene Summary	This gene encodes a subunit of the BRCA1-BRCA2-containing complex (BRCC), which is an E3 ubiquitin ligase. This protein is also thought to be involved in the cellular response to ionizing radiation and progression through the G2/M checkpoint. Alternative splicing results in multiple transcript variants. [provided by RefSeq]
Other Designations	BRCA1/BRCA2-containing complex subunit 36 OTTHUMP00000061450 c6.1A

## Publication Reference

- [BRCC36 is essential for ionizing radiation-induced BRCA1 phosphorylation and nuclear foci formation.](#)

Chen X, Arciero CA, Wang C, Broccoli D, Godwin AK.

Cancer Research 2006 May; 66(10):5039.

- [Regulation of BRCC, a holoenzyme complex containing BRCA1 and BRCA2, by a signalosome-like subunit and its role in DNA repair.](#)

Dong Y, Hakimi MA, Chen X, Kumaraswamy E, Cooch NS, Godwin AK, Shiekhattar R.

Molecular Cell 2003 Nov; 12(5):1087.

Application: WB-Tr, Human, HEK 293 cells