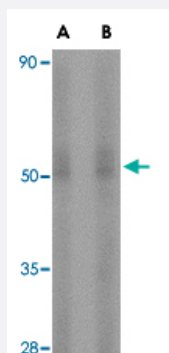


STEAP3 polyclonal antibody

Catalog # PAB13008

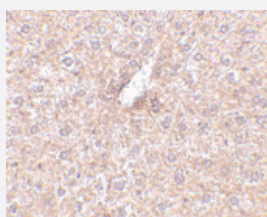
Size 100 ug

Applications



Western Blot (Tissue lysate)

Western blot analysis of STEAP3 in rat liver tissue lysate with STEAP3 polyclonal antibody (Cat # PAB13008) at (A) 1 and (B) 2 ug/mL .



Immunohistochemistry (Formalin/PFA-fixed paraffin-embedded sections)

Immunohistochemistry of STEAP3 in mouse liver tissue with STEAP3 polyclonal antibody (Cat # PAB13008) at 2.5 ug/mL .

Specification

Product Description	Rabbit polyclonal antibody raised against synthetic peptide of STEAP3.
Immunogen	A synthetic peptide corresponding to N-terminus 15 amino acids of human STEAP3.
Host	Rabbit
Reactivity	Human, Mouse, Rat
Form	Liquid
Recommend Usage	Western Blot (1-2 ug/mL) The optimal working dilution should be determined by the end user.

Storage Buffer	In PBS (0.02% sodium azide)
Storage Instruction	Store at 4°C for three months. For long term storage store at -20°C. Aliquot to avoid repeated freezing and thawing.
Note	This product contains sodium azide: a POISONOUS AND HAZARDOUS SUBSTANCE which should be handled by trained staff only.

Applications

- Western Blot (Tissue lysate)

Western blot analysis of STEAP3 in rat liver tissue lysate with STEAP3 polyclonal antibody (Cat # PAB13008) at (A) 1 and (B) 2 ug/mL .

- Immunohistochemistry (Formalin/PFA-fixed paraffin-embedded sections)

Immunohistochemistry of STEAP3 in mouse liver tissue with STEAP3 polyclonal antibody (Cat # PAB13008) at 2.5 ug/mL .

Gene Info — STEAP3

Entrez GeneID	55240
Protein Accession#	AAH95421
Gene Name	STEAP3
Gene Alias	STMP3, TSAP6, dudlin-2
Gene Description	STEAP family member 3
Omim ID	609671
Gene Ontology	Hyperlink
Other Designations	1010001D01Rik OTTHUMP00000162092 OTTHUMP00000162093 dudlin 2 dudulin 2 six transmembrane prostate protein 3 tumor suppressor pHyde

Publication Reference

- [Transferrin iron uptake is stimulated by ascorbate via an intracellular reductive mechanism.](#)

Lane DJ, Chikhani S, Richardson V, Richardson DR.

Biochimica et Biophysica Acta 2013 Jun; 1833(6):1527.

Application: WB, Human, SK-Mel-28 cells

- [Liver iron transport.](#)

Graham RM, Chua AC, Herbison CE, Olynyk JK, Trinder D.

World Journal of Gastroenterology 2007 Sep; 13(35):4725.

Application: WB-Tr, Human, HEK 293T cells

- [The Steap proteins are metalloredutases.](#)

Ohgami RS, Campagna DR, McDonald A, Fleming MD.

Blood 2006 Aug; 108(4):1388.

- [Identification of a ferrireductase required for efficient transferrin-dependent iron uptake in erythroid cells.](#)

Ohgami RS, Campagna DR, Greer EL, Antiochos B, McDonald A, Chen J, Sharp JJ, Fujiwara Y, Barker JE, Fleming MD.

Nature Genetics 2005 Oct; 37(11):1264.

Pathway

- [p53 signaling pathway](#)

Disease

- [Abortion](#)
- [Genetic Predisposition to Disease](#)
- [Tobacco Use Disorder](#)