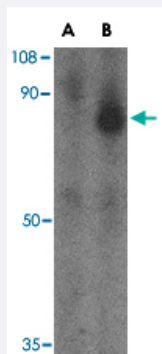


FEZ1 polyclonal antibody

Catalog # PAB13004 Size 100 ug

Applications



Western Blot (Cell lysate)

Western blot analysis of FEZ1 in SK-N-SH cell lysate with FEZ1 polyclonal antibody (Cat # PAB13004) at 1 ug/mL in the (A) presence and (B) absence of blocking peptide.

Specification

Product Description	Rabbit polyclonal antibody raised against synthetic peptide of FEZ1.
Immunogen	A synthetic peptide corresponding to C-terminus 19 amino acids of human FEZ1.
Host	Rabbit
Reactivity	Human, Mouse, Rat
Form	Liquid
Recommend Usage	Western Blot (1 ug/mL) The optimal working dilution should be determined by the end user.
Storage Buffer	In PBS (0.02% sodium azide)
Storage Instruction	Store at 4°C for three months. For long term storage store at -20°C. Aliquot to avoid repeated freezing and thawing.
Note	This product contains sodium azide: a POISONOUS AND HAZARDOUS SUBSTANCE which should be handled by trained staff only.

Applications

- Western Blot (Cell lysate)

Western blot analysis of FEZ1 in SK-N-SH cell lysate with FEZ1 polyclonal antibody (Cat # PAB13004) at 1 ug/mL in the (A) presence and (B) absence of blocking peptide.

Gene Info — FEZ1

Entrez GeneID	9638
Protein Accession#	Q99689
Gene Name	FEZ1
Gene Alias	-
Gene Description	fasciculation and elongation protein zeta 1 (zygin I)
Omim ID	604825
Gene Ontology	Hyperlink
Gene Summary	This gene is an ortholog of the C. elegans unc-76 gene, which is necessary for normal axonal bundling and elongation within axon bundles. Expression of this gene in C. elegans unc-76 mutants can restore to the mutants partial locomotion and axonal fasciculation, suggesting that it also functions in axonal outgrowth. The N-terminal half of the gene product is highly acidic. Alternatively spliced transcript variants encoding different isoforms of this protein have been described. [provided by RefSeq]
Other Designations	zygin 1

Publication Reference

- [Two binding partners cooperate to activate the molecular motor Kinesin-1.](#)

Blasius TL, Cai D, Jih GT, Toret CP, Verhey KJ.

The Journal of Cell Biology 2007 Jan; 176(1):11.

Application: IF, Monkey, COS cells

- [Mammalian homologue of the Caenorhabditis elegans UNC-76 protein involved in axonal outgrowth is a protein kinase C zeta-interacting protein.](#)

Kuroda S, Nakagawa N, Tokunaga C, Tatematsu K, Tanizawa K.

The Journal of Cell Biology 1999 Feb; 144(3):403.

Application: WB-Ce, Rat, PC-12 cells

- [The two-hybrid system: a method to identify and clone genes for proteins that interact with a protein of interest.](#)

Chien CT, Bartel PL, Sternglanz R, Fields S.

PNAS 1991 Nov; 88(21):9578.

Disease

- [Bipolar Disorder](#)
- [Genetic Predisposition to Disease](#)
- [Mental Disorders](#)
- [Neuropsychological Tests](#)
- [Postmortem Changes](#)
- [Schizophrenia](#)