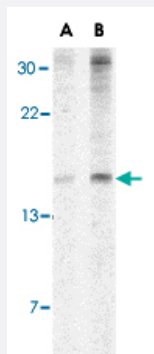


# IER3 polyclonal antibody

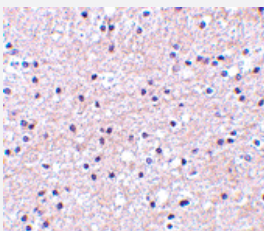
Catalog # PAB13000      Size 100 ug

## Applications



### Western Blot (Tissue lysate)

Western blot analysis of IER3 in human brain tissue lysate with IER3 polyclonal antibody (Cat # PAB13000) at (A) 2 and (B) 4 ug/mL .



### Immunohistochemistry (Formalin/PFA-fixed paraffin-embedded sections)

Immunohistochemistry of IER3 in human liver tissue with IER3 polyclonal antibody (Cat # PAB13000) at 2.5 ug/mL .

## Specification

<b>Product Description</b>	Rabbit polyclonal antibody raised against synthetic peptide of IER3.
<b>Immunogen</b>	A synthetic peptide corresponding to internal region 24 amino acids of human IER3.
<b>Host</b>	Rabbit
<b>Reactivity</b>	Human, Mouse
<b>Form</b>	Liquid
<b>Recommend Usage</b>	Western Blot (2-4 ug/mL) The optimal working dilution should be determined by the end user.

Storage Buffer	In PBS (0.02% sodium azide)
Storage Instruction	Store at 4°C for three months. For long term storage store at -20°C. Aliquot to avoid repeated freezing and thawing.
Note	This product contains sodium azide: a POISONOUS AND HAZARDOUS SUBSTANCE which should be handled by trained staff only.

## Applications

- Western Blot (Tissue lysate)

Western blot analysis of IER3 in human brain tissue lysate with IER3 polyclonal antibody (Cat # PAB13000) at (A) 2 and (B) 4 ug/mL .

- Immunohistochemistry (Formalin/PFA-fixed paraffin-embedded sections)

Immunohistochemistry of IER3 in human liver tissue with IER3 polyclonal antibody (Cat # PAB13000) at 2.5 ug/mL .

## Gene Info — IER3

Entrez GeneID	<a href="#">8870</a>
Protein Accession#	<a href="#">P46695</a>
Gene Name	IER3
Gene Alias	DIF-2, DIF2, GLY96, IEX-1, IEX-1L, IEX1, PRG1
Gene Description	immediate early response 3
Omim ID	<a href="#">602996</a>
Gene Ontology	<a href="#">Hyperlink</a>
Gene Summary	This gene functions in the protection of cells from Fas- or tumor necrosis factor type alpha-induced apoptosis. Partially degraded and unspliced transcripts are found after virus infection in vitro, but these transcripts are not found in vivo and do not generate a valid protein. [provided by RefSeq]
Other Designations	OTTHUMP00000029400 PACAP-responsive gene 1 anti-death protein differentiation-dependent gene 2 expressed in pancreatic carcinoma gly96, mouse, homolog of immediately early gene X-1 radiation-inducible immediate-early gene IEX-1

## Publication Reference

- [Activation of ERK/IER3/PP2A-B56γ-positive feedback loop in lung adenocarcinoma by allelic deletion of B56γ gene.](#)

Ito T, Ozaki S, Chanasong R, Mizutani Y, Oyama T, Sakurai H, Matsumoto I, Takemura H, Kawahara E.

Oncology Reports 2016 Mar; 35(5):2635.

Application: IHC-P, Human, Human lung cancer

- [Dynamic Regulation of Extracellular Signal-Regulated Kinase \(ERK\) by Protein Phosphatase 2A Regulatory Subunit B56γ1 in Nuclei Induces Cell Migration.](#)

Kawahara E, Maenaka S, Shimada E, Nishimura Y, Sakurai H.

PLoS One 2013 May; 8(5):e63729.

Application: WB-Ce, WB-Tr, Human, Calu1 cells

- [Expression of an immediate early gene, IEX-1, in human tissues.](#)

Feldmann KA, Pittelkow MR, Roche PC, Kumar R, Grande JP.

Histochemistry and Cell Biology 2001 Jun; 115(6):489.

Application: IHC-P, WB-Ce, Human, Keratinocytes, Skin, Jejunum, Colon, Skeletal, Cardiac tissues

- [The promoter of human p22/PACAP response gene 1 \(PRG1\) contains functional binding sites for the p53 tumor suppressor and for NFκB.](#)

Schafer H, Diebel J, Art A, Trauzold A, Schmidt WE.

FEBS Letters 1998 Oct; 436(2):139.

- [Identification and characterization of a radiation-inducible glycosylated human early-response gene.](#)

Kondratyev AD, Chung KN, Jung MO.

Cancer Research 1996 Apr; 56(7):1498.

## Disease

- [Abortion](#)
- [Disease Susceptibility](#)
- [Genetic Predisposition to Disease](#)
- [Lupus Erythematosus](#)