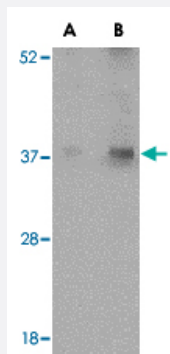


# EMD polyclonal antibody

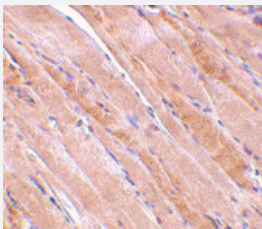
Catalog # PAB12982      Size 100 ug

## Applications



### Western Blot (Tissue lysate)

Western blot analysis of EMD in human skeletal muscle tissue lysate with EMD polyclonal antibody (Cat # PAB12982) at (A) 0.5 and (B) 1 ug/mL .



### Immunohistochemistry (Formalin/PFA-fixed paraffin-embedded sections)

Immunohistochemistry of EMD in human skeletal muscle tissue with EMD polyclonal antibody (Cat # PAB12982) at 2.5 ug/mL .

## Specification

<b>Product Description</b>	Rabbit polyclonal antibody raised against synthetic peptide of EMD.
<b>Immunogen</b>	A synthetic peptide corresponding to N-terminus 19 amino acids of human EMD.
<b>Host</b>	Rabbit
<b>Reactivity</b>	Human, Mouse, Rat
<b>Form</b>	Liquid
<b>Recommend Usage</b>	Western Blot (0.5-1 ug/mL) The optimal working dilution should be determined by the end user.

Storage Buffer	In PBS (0.02% sodium azide)
Storage Instruction	Store at 4°C for three months. For long term storage store at -20°C. Aliquot to avoid repeated freezing and thawing.
Note	This product contains sodium azide: a POISONOUS AND HAZARDOUS SUBSTANCE which should be handled by trained staff only.

## Applications

- Western Blot (Tissue lysate)

Western blot analysis of EMD in human skeletal muscle tissue lysate with EMD polyclonal antibody (Cat # PAB12982) at (A) 0.5 and (B) 1 ug/mL .

- Immunohistochemistry (Formalin/PFA-fixed paraffin-embedded sections)

Immunohistochemistry of EMD in human skeletal muscle tissue with EMD polyclonal antibody (Cat # PAB12982) at 2.5 ug/mL .

## Gene Info — EMD

Entrez GeneID	<a href="#">2010</a>
Protein Accession#	<a href="#">NP_000108</a>
Gene Name	EMD
Gene Alias	EDMD, LEMD5, STA
Gene Description	emerin
Omim ID	<a href="#">300384</a> <a href="#">310300</a>
Gene Ontology	<a href="#">Hyperlink</a>
Gene Summary	Emerin is a serine-rich nuclear membrane protein and a member of the nuclear lamina-associated protein family. It mediates membrane anchorage to the cytoskeleton. Dreifuss-Emery muscular dystrophy is an X-linked inherited degenerative myopathy resulting from mutation in the emerine gene. [provided by RefSeq]
Other Designations	LEM domain containing 5 OTTHUMP00000031938 OTTHUMP00000061687

## Publication Reference

- [Lamins: building blocks or regulators of gene expression?](#)

Hutchison CJ.

Nature Reviews. Molecular Cell Biology 2002 Nov; 3(11):848.

- [Solution structure of the constant region of nuclear envelope protein LAP2 reveals two LEM-domain structures: one binds BAF and the other binds DNA](#)

Cai M, Huang Y, Ghirlando R, Wilson KL, Craigie R, Clore GM.

EMBO J 2001 Aug; 20(16):4399.

- [The barrier-to-autointegration protein is a host factor for HIV type 1 integration.](#)

Chen H, Engelman A.

PNAS 1998 Dec; 95(26):15270.

## Pathway

- [Arrhythmogenic right ventricular cardiomyopathy \(ARVC\)](#)
- [Hypertrophic cardiomyopathy \(HCM\)](#)

## Disease

- [Cardiomyopathy](#)
- [Cardiovascular Diseases](#)
- [Diabetes Mellitus](#)
- [Edema](#)