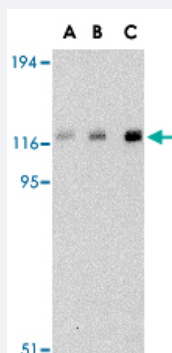


CBL polyclonal antibody

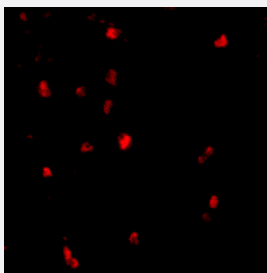
Catalog # PAB12976 Size 100 ug

Applications



Western Blot (Cell lysate)

Western blot analysis of CBL in Daudi cell lysate with CBL polyclonal antibody (Cat # PAB12976) at (A) 0.5, (B) 1, and (C) 2 ug/mL .



Immunofluorescence

Immunofluorescence of CBL in human lymph node tissue with CBL polyclonal antibody (Cat # PAB12976) at 20 ug/mL .

Specification

Product Description	Rabbit polyclonal antibody raised against synthetic peptide of CBL.
Immunogen	A synthetic peptide corresponding to C-terminus 14 amino acids of human CBL.
Host	Rabbit
Reactivity	Human, Mouse, Rat
Form	Liquid
Recommend Usage	Western Blot (0.5-1 ug/mL) The optimal working dilution should be determined by the end user.

Storage Buffer	In PBS (0.02% sodium azide)
Storage Instruction	Store at 4°C for three months. For long term storage store at -20°C. Aliquot to avoid repeated freezing and thawing.
Note	This product contains sodium azide: a POISONOUS AND HAZARDOUS SUBSTANCE which should be handled by trained staff only.

Applications

- Western Blot (Cell lysate)

Western blot analysis of CBL in Daudi cell lysate with CBL polyclonal antibody (Cat # PAB12976) at (A) 0.5, (B) 1, and (C) 2 ug/mL .

- Immunofluorescence

Immunofluorescence of CBL in human lymph node tissue with CBL polyclonal antibody (Cat # PAB12976) at 20 ug/mL .

Gene Info — CBL

Entrez GeneID	867
Protein Accession#	P22681
Gene Name	CBL
Gene Alias	C-CBL, CBL2, RNF55
Gene Description	Cas-Br-M (murine) ecotropic retroviral transforming sequence
Omim ID	165360
Gene Ontology	Hyperlink
Gene Summary	The cbl oncogene was first identified as part of a transforming retrovirus which induces mouse pre-B and pro-B cell lymphomas. As an adaptor protein for receptor protein-tyrosine kinases, it positively regulates receptor protein-tyrosine kinase ubiquitination in a manner dependent upon its variant SH2 and RING finger domains. Ubiquitination of receptor protein-tyrosine kinases terminates signaling by marking active receptors for degradation. [provided by RefSeq]
Other Designations	oncogene CBL2

Publication Reference

- [The Cbl family proteins: ring leaders in regulation of cell signaling.](#)

Swaminathan G, Tsygankov AY.

Journal of Cellular Physiology 2006 Oct; 209(1):21.

Application: WB, Human, Jurkat cells

- [c-Cbl and Cbl-b ubiquitin ligases: substrate diversity and the negative regulation of signalling responses.](#)

Thien CB, Langdon WY.

The Biochemical Journal 2005 Oct; 391(Pt 2):153.

Application: WB-Tr, Human, Human mammalian cells

- [Themes and variations on ubiquitylation.](#)

Weissman AM.

Nature Reviews. Molecular Cell Biology 2001 Mar; 2(3):169.

Pathway

- [Chronic myeloid leukemia](#)
- [Endocytosis](#)
- [ErbB signaling pathway](#)
- [Insulin signaling pathway](#)
- [Jak-STAT signaling pathway](#)
- [Pathways in cancer](#)
- [T cell receptor signaling pathway](#)
- [Ubiquitin mediated proteolysis](#)

Disease

- [Diabetes Mellitus](#)
- [Disease Progression](#)
- [Genetic Predisposition to Disease](#)
- [Leukemia](#)

- [Tobacco Use Disorder](#)