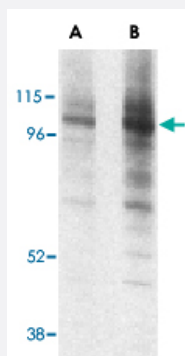


LAMP1 polyclonal antibody

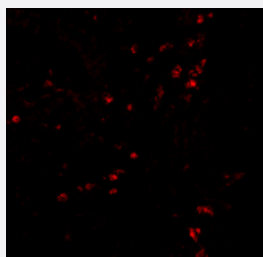
Catalog # PAB12957 Size 100 ug

Applications



Western Blot (Cell lysate)

Western blot analysis of LAMP1 in EL4 cell lysate with LAMP1 polyclonal antibody (Cat # PAB12957) at (A) 1 and (B) 2 ug/mL .



Immunofluorescence

Immunofluorescence of LAMP1 in human colon tissue with LAMP1 polyclonal antibody (Cat # PAB12957) at 20 ug/mL .

Specification

Product Description	Rabbit polyclonal antibody raised against synthetic peptide of LAMP1.
Immunogen	A synthetic peptide corresponding to internal region 15 amino acids of human LAMP1.
Host	Rabbit
Reactivity	Human, Mouse, Rat
Specificity	Despite its predicted size, LAMP-1 migrates at 110KDa in SDS-PAGE.
Form	Liquid

Recommend Usage	Western Blot (1-2 ug/mL) The optimal working dilution should be determined by the end user.
Storage Buffer	In PBS (0.02% sodium azide)
Storage Instruction	Store at 4°C for up to one year. Aliquot to avoid repeated freezing and thawing.
Note	This product contains sodium azide: a POISONOUS AND HAZARDOUS SUBSTANCE which should be handled by trained staff only.

Applications

- Western Blot (Cell lysate)

Western blot analysis of LAMP1 in EL4 cell lysate with LAMP1 polyclonal antibody (Cat # PAB12957) at (A) 1 and (B) 2 ug/mL .

- Immunohistochemistry

- Immunofluorescence

Immunofluorescence of LAMP1 in human colon tissue with LAMP1 polyclonal antibody (Cat # PAB12957) at 20 ug/mL .

Gene Info — LAMP1

Entrez GeneID	3916
Protein Accession#	NP_005552
Gene Name	LAMP1
Gene Alias	CD107a, LAMPA, LGP120
Gene Description	lysosomal-associated membrane protein 1
Omim ID	153330
Gene Ontology	Hyperlink
Gene Summary	The protein encoded by this gene is a member of a family of membrane glycoproteins. This glyco protein provides selectins with carbohydrate ligands. It may also play a role in tumor cell metastasis. [provided by RefSeq]
Other Designations	OTTHUMP00000040663

Publication Reference

- [Distinguishing human peripheral blood CD16+ myeloid cells based on phenotypic characteristics.](#)

Fromm PD, Silveira PA, Hsu JL, Papadimitriou MS, Lo TH, Ju X, Kupresanin F, Romano A, Hsu WH, Bryant CE, Kong B, Abadir E, Mekkawy A, McGuire H, Groth BFS, Cunningham I, Newman E, Gibson J, Hogarth PM, Hart DNJ, Clark GJ.
Journal of Leukocyte Biology 2020 Feb; 107(2):323.

Application: IF, Human, Dendritic cells, Monocytes

- [Autophagy as a cell death and tumor suppressor mechanism.](#)

Gozuacik D, Kimchi A.

Oncogene 2004 Apr; 23(16):2891.

- [Tor-mediated induction of autophagy via an Apg1 protein kinase complex.](#)

Kamada Y, Funakoshi T, Shintani T, Nagano K, Ohsumi M, Ohsumi Y.

Journal of Cellular Biology 2000 Sep; 150(6):1507.

- [Identification of two lysosomal membrane glycoproteins.](#)

Chen JW, Murphy TL, Willingham MC, Pastan I, August JT.

The Journal of Cell Biology 1985 Jul; 101(1):85.

Application: IEM, IF, IP, Mouse, HaNIH, NIH/3T3, P388D1 cells

Pathway

- [Lysosome](#)