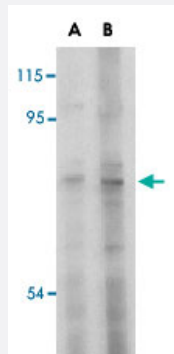


# TRAF3 polyclonal antibody

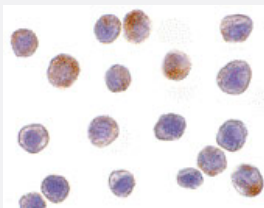
Catalog # PAB12955      Size 100 ug

## Applications



### Western Blot (Cell lysate)

Western blot analysis of TRAF3 in HeLa cell lysate with TRAF3 polyclonal antibody (Cat # PAB12955) at (A) 2 and (B) 4 ug/mL .



### Immunocytochemistry

Immunocytochemistry of TRAF3 in HeLa cells with TRAF3 polyclonal antibody (Cat # PAB12955) at 10 ug/mL .

## Specification

<b>Product Description</b>	Rabbit polyclonal antibody raised against synthetic peptide of TRAF3.
<b>Immunogen</b>	A synthetic peptide corresponding to N-terminus 15 amino acids of human TRAF3.
<b>Host</b>	Rabbit
<b>Reactivity</b>	Human, Mouse, Rat
<b>Form</b>	Liquid
<b>Recommend Usage</b>	Western Blot (1-2 ug/mL) The optimal working dilution should be determined by the end user.

Storage Buffer	In PBS (0.02% sodium azide)
Storage Instruction	Store at 4°C for three months. For long term storage store at -20°C. Aliquot to avoid repeated freezing and thawing.
Note	This product contains sodium azide: a POISONOUS AND HAZARDOUS SUBSTANCE which should be handled by trained staff only.

## Applications

- Western Blot (Cell lysate)

Western blot analysis of TRAF3 in HeLa cell lysate with TRAF3 polyclonal antibody (Cat # PAB12955) at (A) 2 and (B) 4 ug/mL .

- Immunocytochemistry

Immunocytochemistry of TRAF3 in HeLa cells with TRAF3 polyclonal antibody (Cat # PAB12955) at 10 ug/mL .

## Gene Info — TRAF3

Entrez GeneID	<a href="#">7187</a>
Protein Accession#	<a href="#">NP_663777</a>
Gene Name	TRAF3
Gene Alias	CAP-1, CD40bp, CRAF1, LAP1
Gene Description	TNF receptor-associated factor 3
Omim ID	<a href="#">601896</a>
Gene Ontology	<a href="#">Hyperlink</a>

Gene Summary	The protein encoded by this gene is a member of the TNF receptor associated factor (TRAF) protein family. TRAF proteins associate with, and mediate the signal transduction from, members of the TNF receptor (TNFR) superfamily. This protein participates in the signal transduction of CD40, a TNFR family member important for the activation of the immune response. This protein is found to be a critical component of the lymphotoxin-beta receptor (LTbetaR) signaling complex, which induces NF-kappaB activation and cell death initiated by LTbeta ligation. Epstein-Barr virus encoded latent infection membrane protein-1 (LMP1) can interact with this and several other members of the TRAF family, which may be essential for the oncogenic effects of LMP1. Three alternatively spliced transcript variants encoding two distinct isoforms have been reported. [provided by RefSeq]
--------------	---

Other Designations	CD40 associated protein 1 CD40 binding protein CD40 receptor associated factor 1 LMP1 associated protein
--------------------	--

## Publication Reference

- [Tumor necrosis factor receptor-associated factors \(TRAFs\)--a family of adapter proteins that regulates life and death.](#)  
Arch RH, Gedrich RW, Thompson CB.  
Genes & Development 1998 Sep; 12(18):2821.
- [Involvement of CRAF1, a relative of TRAF, in CD40 signaling.](#)  
Cheng G, Cleary AM, Ye ZS, Hong DI, Lederman S, Baltimore D.  
Science 1995 Mar; 267(5203):1494.
- [The Epstein-Barr virus transforming protein LMP1 engages signaling proteins for the tumor necrosis factor receptor family.](#)  
Mosialos G, Birkenbach M, Yalamanchili R, VanArsdale T, Ware C, Kieff E.  
Cell 1995 Feb; 80(3):389.

## Pathway

- [Pathways in cancer](#)
- [Small cell lung cancer](#)
- [Toll-like receptor signaling pathway](#)

## Disease

- [Alzheimer disease](#)
- [Cardiovascular Diseases](#)
- [Diabetes Complications](#)
- [Diabetes Mellitus](#)
- [Edema](#)
- [Genetic Predisposition to Disease](#)
- [HIV Infections](#)

- [Metabolic Syndrome X](#)
- [Neoplasms](#)
- [Osteoporosis](#)