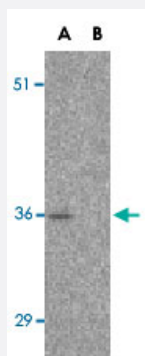


C1QTNF3 polyclonal antibody

Catalog # PAB12950

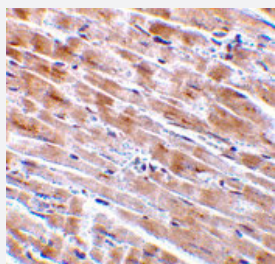
Size 100 ug

Applications



Western Blot (Tissue lysate)

Western blot analysis of C1QTNF3 in mouse heart tissue lysate with C1QTNF3 polyclonal antibody (Cat # PAB12950) at 1 ug/mL in the (A) absence and (B) presence of blocking peptide.



Immunohistochemistry (Formalin/PFA-fixed paraffin-embedded sections)

Immunohistochemistry of C1QTNF3 in mouse heart tissue with C1QTNF3 polyclonal antibody (Cat # PAB12950) at 2 ug/mL .

Specification

Product Description	Rabbit polyclonal antibody raised against synthetic peptide of C1QTNF3.
Immunogen	A synthetic peptide corresponding to internal region 16 amino acids of human C1QTNF3.
Host	Rabbit
Reactivity	Human, Mouse
Specificity	CTRP3 antibody is human, mouse and rat reactive. These proteins are often highly modified post-translationally and migrate in SDS-PAGE at positions other than their predicted size.
Form	Liquid

Recommend Usage	Western Blot (1-2 ug/mL) The optimal working dilution should be determined by the end user.
Storage Buffer	In PBS (0.02% sodium azide)
Storage Instruction	Store at 4°C for three months. For long term storage store at -20°C. Aliquot to avoid repeated freezing and thawing.
Note	This product contains sodium azide: a POISONOUS AND HAZARDOUS SUBSTANCE which should be handled by trained staff only.

Applications

- Western Blot (Tissue lysate)

Western blot analysis of C1QTNF3 in mouse heart tissue lysate with C1QTNF3 polyclonal antibody (Cat # PAB12950) at 1 ug/mL in the (A) absence and (B) presence of blocking peptide.

- Immunohistochemistry (Formalin/PFA-fixed paraffin-embedded sections)

Immunohistochemistry of C1QTNF3 in mouse heart tissue with C1QTNF3 polyclonal antibody (Cat # PAB12950) at 2 ug/mL .

Gene Info — C1QTNF3

Entrez GeneID	114899
Protein Accession#	NP_852100
Gene Name	C1QTNF3
Gene Alias	C1ATNF3, CORS26, CTRP3, Corcs, Cors, FLJ37576
Gene Description	C1q and tumor necrosis factor related protein 3
Gene Ontology	Hyperlink
Other Designations	collagenous repeat-containing sequence of 26-kDa complement-c1q tumor necrosis factor-related protein 3

Publication Reference

- [ACRP30, a new hormone controlling fat and glucose metabolism.](#)

Tsao TS, Lodish HF, Fruebis J.

European Journal of Pharmacology 2002 Apr; 440(2-3):213.

- [Human lactoferrin interacts with soluble CD14 and inhibits expression of endothelial adhesion molecules, E-selectin and ICAM-1, induced by the CD14-lipopolysaccharide complex.](#)

Baveye S, Elaiss E, Fernig DG, Blanquart C, Mazurier J, Legrand D.

Infection and Immunity 2000 Dec; 68(12):6519.

- [The crystal structure of a complement-1q family protein suggests an evolutionary link to tumor necrosis factor.](#)

Shapiro L, Scherer PE.

Current Biology: CB 1998 Mar; 8(6):335.

Disease

- [Cleft Lip](#)
- [Cleft Palate](#)
- [Schizophrenia](#)