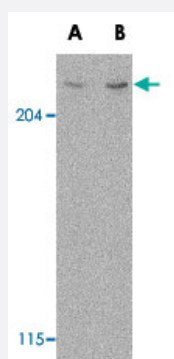


# MTOR polyclonal antibody

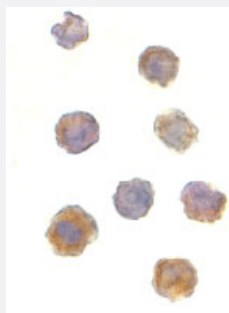
Catalog # PAB12944      Size 100 ug

## Applications



### Western Blot (Cell lysate)

Western blot analysis of MTOR in L1210 cell lysate with MTOR polyclonal antibody (Cat # PAB12944) at (A) 1 and (B) 2 ug/mL .



### Immunocytochemistry

Immunocytochemistry of MTOR in L1210 cells with MTOR polyclonal antibody (Cat # PAB12944) at 2 ug/mL .

## Specification

<b>Product Description</b>	Rabbit polyclonal antibody raised against synthetic peptide of FRAP1.
<b>Immunogen</b>	A synthetic peptide corresponding to N-terminus 15 amino acids of human FRAP1.
<b>Host</b>	Rabbit
<b>Reactivity</b>	Human, Mouse
<b>Form</b>	Liquid
<b>Recommend Usage</b>	Western Blot (1 ug/mL) The optimal working dilution should be determined by the end user.

Storage Buffer	In PBS (0.02% sodium azide)
Storage Instruction	Store at 4°C for three months. For long term storage store at -20°C. Aliquot to avoid repeated freezing and thawing.
Note	This product contains sodium azide: a POISONOUS AND HAZARDOUS SUBSTANCE which should be handled by trained staff only.

## Applications

- Western Blot (Cell lysate)

Western blot analysis of MTOR in L1210 cell lysate with MTOR polyclonal antibody (Cat # PAB12944) at (A) 1 and (B) 2 ug/mL .

- Immunocytochemistry

Immunocytochemistry of MTOR in L1210 cells with MTOR polyclonal antibody (Cat # PAB12944) at 2 ug/mL .

## Gene Info — MTOR

Entrez GeneID	<a href="#">2475</a>
Protein Accession#	<a href="#">NP_004949</a>
Gene Name	MTOR
Gene Alias	FRAP, FRAP1, FRAP2, RAFT1, RAPT1
Gene Description	mechanistic target of rapamycin
Omim ID	<a href="#">601231</a>
Gene Ontology	<a href="#">Hyperlink</a>
Gene Summary	The protein encoded by this gene belongs to a family of phosphatidylinositol kinase-related kinases. These kinases mediate cellular responses to stresses such as DNA damage and nutrient deprivation. This protein acts as the target for the cell-cycle arrest and immunosuppressive effects of the FKBP12-rapamycin complex. The ANGPTL7 gene is located in an intron of this gene. [provided by RefSeq]
Other Designations	FK506 binding protein 12-rapamycin associated protein 1 FK506 binding protein 12-rapamycin associated protein 2 FK506-binding protein 12-rapamycin complex-associated protein 1 FKBP-rapamycin associated protein FKBP12-rapamycin complex-associated protein 1

## Publication Reference

- [Target of rapamycin \(TOR\): an integrator of nutrient and growth factor signals and coordinator of cell growth and cell cycle progression.](#)

Fingar DC, Blenis J.

Oncogene 2004 Apr; 23(18):3151.

- [Molecular mechanisms of immunosuppression by cyclosporine, FK506, and rapamycin.](#)

Cardenas ME, Zhu D, Heitman J.

Current Opinion in Nephrology and Hypertension 1995 Nov; 4(6):472.

Application: WB-Ce, WB-Tr, Human, Mammalian cells

- [RAFT1: a mammalian protein that binds to FKBP12 in a rapamycin-dependent fashion and is homologous to yeast TORs.](#)

Sabatini DM, Erdjument-Bromage H, Lui M, Tempst P, Snyder SH.

Cell 1994 Jul; 78(1):35.

Application: IP, WB-Re, N/A, Recombinant protein

## Pathway

- [Acute myeloid leukemia](#)
- [Adipocytokine signaling pathway](#)
- [ErbB signaling pathway](#)
- [Glioma](#)
- [Insulin signaling pathway](#)
- [mTOR signaling pathway](#)
- [Pathways in cancer](#)
- [Prostate cancer](#)
- [Type II diabetes mellitus](#)

## Disease

- [Adenocarcinoma](#)
- [Alzheimer disease](#)

- [Cardiovascular Diseases](#)
- [Colonic Neoplasms](#)
- [Diabetes Complications](#)
- [Esophageal Neoplasms](#)
- [Kidney Failure](#)
- [Metabolic Syndrome X](#)
- [Neoplasms](#)
- [Osteoporosis](#)
- [Rectal Neoplasms](#)
- [Tobacco Use Disorder](#)