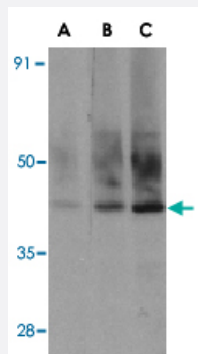


Sigirr polyclonal antibody

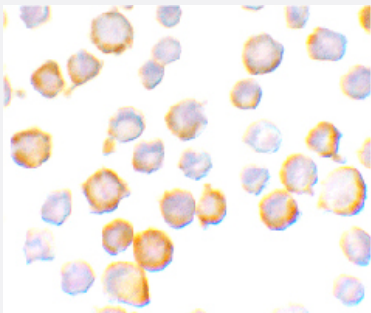
Catalog # PAB12930 Size 100 ug

Applications



Western Blot (Cell lysate)

Western blot analysis of Sigirr in A-549 cell lysate with Sigirr polyclonal antibody (Cat # PAB12930) at (A) 0.5, (B) 1, and (C) 2 ug/mL .



Immunocytochemistry

Immunocytochemistry of Sigirr in A-549 cells with Sigirr polyclonal antibody (Cat # PAB12930) at 10 ug/mL .

Specification

Product Description	Rabbit polyclonal antibody raised against synthetic peptide of Sigirr.
Immunogen	A synthetic peptide corresponding to C-terminus 15 amino acids of mouse Sigirr.
Host	Rabbit
Reactivity	Human, Mouse
Form	Liquid
Recommend Usage	Western Blot (0.5-1 ug/mL) The optimal working dilution should be determined by the end user.

Storage Buffer	In PBS (0.02% sodium azide)
Storage Instruction	Store at 4°C for three months. For long term storage store at -20°C. Aliquot to avoid repeated freezing and thawing.
Note	This product contains sodium azide: a POISONOUS AND HAZARDOUS SUBSTANCE which should be handled by trained staff only.

Applications

- Western Blot (Cell lysate)

Western blot analysis of Sigirr in A-549 cell lysate with Sigirr polyclonal antibody (Cat # PAB12930) at (A) 0.5, (B) 1, and (C) 2 ug/mL .

- Immunocytochemistry

Immunocytochemistry of Sigirr in A-549 cells with Sigirr polyclonal antibody (Cat # PAB12930) at 10 ug/mL .

Gene Info — Sigirr

Entrez GeneID	24058
Protein Accession#	CAG33619
Gene Name	Sigirr
Gene Alias	A1256711, MGC102426, TIR8
Gene Description	single immunoglobulin and toll-interleukin 1 receptor (TIR) domain
Gene Ontology	Hyperlink
Other Designations	single Ig IL-1 receptor related protein single Ig IL-1R-related protein

Publication Reference

- [Toll-like receptors.](#)

Takeda K, Kaisho T, Akira S.

Annual Review of Immunology 2001 Dec; 21:335.

- [Innate immune recognition.](#)

Janeway CA Jr, Medzhitov R.

Annual Review of Immunology 2001 Oct; 20:197.

- [Identification and characterization of SIGIRR, a molecule representing a novel subtype of the IL-1R superfamily.](#)

Thomassen E, Renshaw BR, Sims JE.

Cytokine 1999 Jun; 11(6):389.

Application: WB-Tr, Monkey, COS-7 cells