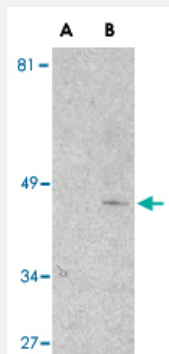


II1r11 polyclonal antibody

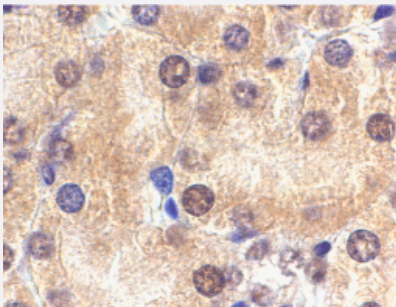
Catalog # PAB12929 Size 100 ug

Applications



Western Blot (Tissue lysate)

Western blot analysis of II1r11 in mouse kidney lysate with II1r11 polyclonal antibody (Cat # PAB12929) at 1 ug/mL in the presence (lane A) or absence (lane B) of 1 ug blocking peptide.



Immunohistochemistry (Formalin/PFA-fixed paraffin-embedded sections)

Immunohistochemistry of II1r11 in mouse kidney tissue with II1r11 polyclonal antibody (Cat # PAB12929) at 2 ug/mL .

Specification

Product Description	Rabbit polyclonal antibody raised against synthetic peptide of II1r11.
Immunogen	A synthetic peptide corresponding to N-terminus 16 amino acids of mouse II1r11.
Host	Rabbit
Reactivity	Human, Mouse
Specificity	This peptide is common to all three known ST2 isoforms. Anti-ST2 is mouse reactive.
Form	Liquid

Recommend Usage	Western Blot (1-2 ug/mL) The optimal working dilution should be determined by the end user.
Storage Buffer	In PBS (0.02% sodium azide)
Storage Instruction	Store at 4°C for three months. For long term storage store at -20°C. Aliquot to avoid repeated freezing and thawing.
Note	This product contains sodium azide: a POISONOUS AND HAZARDOUS SUBSTANCE which should be handled by trained staff only.

Applications

- Western Blot (Tissue lysate)

Western blot analysis of Il1r1 in mouse kidney lysate with Il1r1 polyclonal antibody (Cat # PAB12929) at 1 ug/mL in the presence (lane A) or absence (lane B) of 1 ug blocking peptide.

- Immunohistochemistry (Formalin/PFA-fixed paraffin-embedded sections)

Immunohistochemistry of Il1r1 in mouse kidney tissue with Il1r1 polyclonal antibody (Cat # PAB12929) at 2 ug/mL .

Gene Info — Il1r1

Entrez GeneID	17082
Protein Accession#	BAA02854
Gene Name	Il1r1
Gene Alias	DER4, Fit-1, Ly84, ST2L, St2, St2-rs1, T1, T1/ST2
Gene Description	interleukin 1 receptor-like 1
Gene Ontology	Hyperlink
Other Designations	T1 lymphocyte antigen 84

Publication Reference

- [Innate immune recognition.](#)

Janeway CA Jr, Medzhitov R.

Annual Review of Immunology 2001 Oct; 20:197.

- [A novel pathway regulating lipopolysaccharide-induced shock by ST2/T1 via inhibition of Toll-like receptor 4 expression.](#)

Sweet MJ, Leung BP, Kang D, Sogaard M, Schulz K, Trajkovic V, Campbell CC, Xu D, Liew FY.

The Journal of Immunology 2001 Jun; 166(11):6633.

Application: Treated, Recombinant protein

- [Growth factor-induced delayed early response genes.](#)

Lanahan A, Williams JB, Sanders LK, Nathans D.

Molecular and Cellular Biology 1992 Sep; 12(9):3919.