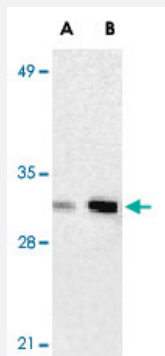


ANP32A polyclonal antibody

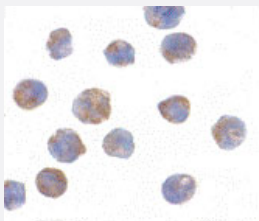
Catalog # PAB12899 Size 100 ug

Applications



Western Blot (Cell lysate)

Western blot analysis of ANP32A expression in human Raji cell lysate with ANP32A polyclonal antibody (Cat # PAB12899) at 2 ug/mL (lane A) and 4 ug/mL (lane B), respectively.



Immunocytochemistry

Immunocytochemistry of ANP32A in Raji cells with ANP32A polyclonal antibody (Cat # PAB12899) at 2 ug/mL .

Specification

Product Description	Rabbit polyclonal antibody raised against synthetic peptide of ANP32A.
Immunogen	A synthetic peptide corresponding to C-terminus of human ANP32A.
Host	Rabbit
Reactivity	Human, Mouse
Specificity	This sequence is identical between human and rat PHAP I. A band at approximately 32 KDa can be detected. This polyclonal antibody has no cross-reaction to PHAP I2a and PHAP III.
Form	Liquid

Recommend Usage	Western Blot (2-4 ug/mL) The optimal working dilution should be determined by the end user.
Storage Buffer	In PBS (0.02% sodium azide)
Storage Instruction	Store at 4°C for three months. For long term storage store at -20°C. Aliquot to avoid repeated freezing and thawing.
Note	This product contains sodium azide: a POISONOUS AND HAZARDOUS SUBSTANCE which should be handled by trained staff only.

Applications

- Western Blot (Cell lysate)

Western blot analysis of ANP32A expression in human Raji cell lysate with ANP32A polyclonal antibody (Cat # PAB12899) at 2 ug/mL (lane A) and 4 ug/mL (lane B), respectively.

- Immunocytochemistry

Immunocytochemistry of ANP32A in Raji cells with ANP32A polyclonal antibody (Cat # PAB12899) at 2 ug/mL .

Gene Info — ANP32A

Entrez GeneID	8125
Protein Accession#	P39687
Gene Name	ANP32A
Gene Alias	C15orf1, I1PP2A, LANP, MAPM, MGC119787, MGC150373, PHAP1, PHAPI, PP32
Gene Description	acidic (leucine-rich) nuclear phosphoprotein 32 family, member A
Omim ID	600832
Gene Ontology	Hyperlink
Gene Summary	O
Other Designations	cerebellar leucine rich acidic nuclear protein inhibitor-1 of protein phosphatase-2A mapmodulin putative human HLA class II associated protein I

Publication Reference

- [Distinctive roles of PHAP proteins and prothymosin-alpha in a death regulatory pathway.](#)

Jiang X, Kim HE, Shu H, Zhao Y, Zhang H, Kofron J, Donnelly J, Burns D, Ng SC, Rosenberg S, Wang X.

Science 2003 Jan; 299(5604):223.

- [Apoptosis. Life and death decisions.](#)

Nicholson DW, Thornberry NA.

Science 2003 Jan; 299(5604):214.

Disease

- [Cardiovascular Diseases](#)
- [Diabetes Mellitus](#)
- [Edema](#)
- [Genetic Predisposition to Disease](#)
- [Osteoarthritis](#)