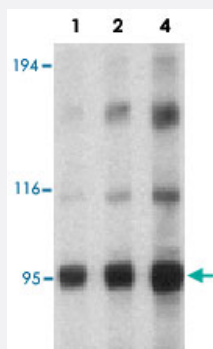


NLRP1 polyclonal antibody

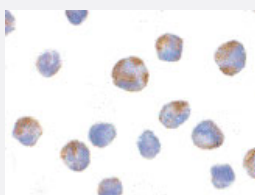
Catalog # PAB12885 Size 100 ug

Applications



Western Blot (Cell lysate)

Western blot analysis of NLRP1 in U-937 cell lysate with NLRP1 polyclonal antibody (Cat # PAB12885) at 1, 2 and 4 ug/mL .



Immunocytochemistry

Immunocytochemistry of NLRP1 in K-562 cells with NLRP1 polyclonal antibody (Cat # PAB12885) at 10 ug/mL .

Specification

Product Description	Rabbit polyclonal antibody raised against synthetic peptide of NLRP1.
Immunogen	A synthetic peptide corresponding to C-terminus 13 amino acids of human NLRP1.
Host	Rabbit
Reactivity	Human
Specificity	NALP1 antibody is human specific.
Form	Liquid

Recommend Usage	Western Blot (1-2 ug/mL) The optimal working dilution should be determined by the end user.
Storage Buffer	In PBS (0.02% sodium azide)
Storage Instruction	Store at 4°C for three months. For long term storage store at -20°C. Aliquot to avoid repeated freezing and thawing.
Note	This product contains sodium azide: a POISONOUS AND HAZARDOUS SUBSTANCE which should be handled by trained staff only.

Applications

- Western Blot (Cell lysate)

Western blot analysis of NLRP1 in U-937 cell lysate with NLRP1 polyclonal antibody (Cat # PAB12885) at 1, 2 and 4 ug/mL .

- Immunocytochemistry

Immunocytochemistry of NLRP1 in K-562 cells with NLRP1 polyclonal antibody (Cat # PAB12885) at 10 ug/mL .

Gene Info — NLRP1

Entrez GeneID	22861
Protein Accession#	AAG30288
Gene Name	NLRP1
Gene Alias	CARD7, CLR17.1, DEFCAP, DEFCAP-L/S, DKFZp586O1822, KIAA0926, NAC, NALP1, PP1044, SLEV1, VAMAS1
Gene Description	NLR family, pyrin domain containing 1
Omim ID	606579 606636
Gene Ontology	Hyperlink
Gene Summary	This gene encodes a member of the Ced-4 family of apoptosis proteins. Ced-family members contain a caspase recruitment domain (CARD) and are known to be key mediators of programmed cell death. The encoded protein contains a distinct N-terminal pyrin-like motif, which is possibly involved in protein-protein interactions. This protein interacts strongly with caspase 2 and weakly with caspase 9. Overexpression of this gene was demonstrated to induce apoptosis in cells. Multiple alternatively spliced transcript variants encoding distinct isoforms have been found for this gene, but the biological validity of some variants has not been determined. [provided by RefSeq]

Other Designations

NACHT, LRR and PYD containing protein 1|NACHT, leucine rich repeat and PYD (pyrin domain) containing 1|NACHT, leucine rich repeat and PYD containing 1|caspase recruitment domain prote in 7|death effector filament-forming Ced-4-like apoptosis protein|nucleo

Publication Reference

- [NALPs: a novel protein family involved in inflammation.](#)

Tschopp J, Martinon F, Burns K.

Nature Reviews. Molecular Cell Biology 2003 Feb; 4(2):95.

Application: IHC, WB, Human, Heart, Kidney, Livers, Lungs, Thymus, Spleen

- [A novel enhancer of the Apaf1 apoptosome involved in cytochrome c-dependent caspase activation and apoptosis.](#)

Chu ZL, Pio F, Xie Z, Welsh K, Krajewska M, Krajewski S, Godzik A, Reed JC.

The Journal of Biological Chemistry 2001 Mar; 276(12):9239.

Application: IHC, IP-WB, WB-Tr, WB-Ti, Humna, 293T, Jurkat cells, Thymus, Spleen, Colon, Liver, Kidney, Heart, Brain, Epidermis

- [Molecular cloning and characterization of DEFCAP-L and -S, two isoforms of a novel member of the mammalian Ced-4 family of apoptosis proteins.](#)

Hlaing T, Guo RF, Dilley KA, Loussia JM, Morrish TA, Shi MM, Vincenz C, Ward PA.

The Journal of Biological Chemistry 2001 Mar; 276(12):9230.

Disease

- [Addison Disease](#)
- [Autoimmune Diseases](#)
- [Cardiovascular Diseases](#)
- [Crohn Disease](#)
- [Dermatitis](#)
- [Diabetes Mellitus](#)
- [Edema](#)
- [Genetic Predisposition to Disease](#)
- [HIV Infections](#)

- [Tobacco Use Disorder](#)
- [Vitiligo](#)