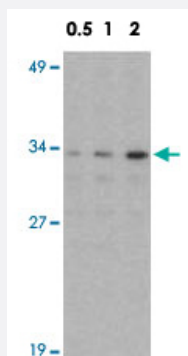


NDEL1 polyclonal antibody

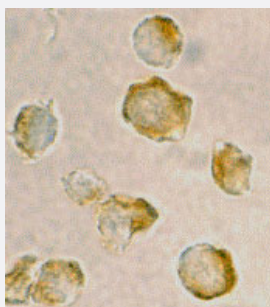
Catalog # PAB12877 Size 100 ug

Applications



Western Blot (Cell lysate)

Western blot analysis of NDEL1 in Jurkat whole cell lysate with NDEL1 polyclonal antibody (Cat # PAB12877) at 0.5, 1, and 2 ug/mL .



Immunocytochemistry

Immunocytochemistry of NDEL1 in Jurkat cells with NDEL1 polyclonal antibody (Cat # PAB12877) at 2 ug/mL .

Specification

Product Description	Rabbit polyclonal antibody raised against synthetic peptide of NDEL1.
Immunogen	A synthetic peptide corresponding to N-terminus 15 amino acids of human NDEL1.
Host	Rabbit
Reactivity	Human, Mouse
Form	Liquid
Recommend Usage	Western Blot (0.5-1 ug/mL) The optimal working dilution should be determined by the end user.

Storage Buffer	In PBS (0.02% sodium azide)
Storage Instruction	Store at 4°C for three months. For long term storage store at -20°C. Aliquot to avoid repeated freezing and thawing.
Note	This product contains sodium azide: a POISONOUS AND HAZARDOUS SUBSTANCE which should be handled by trained staff only.

Applications

- Western Blot (Cell lysate)

Western blot analysis of NDEL1 in Jurkat whole cell lysate with NDEL1 polyclonal antibody (Cat # PAB12877) at 0.5, 1, and 2 ug/mL .

- Immunocytochemistry

Immunocytochemistry of NDEL1 in Jurkat cells with NDEL1 polyclonal antibody (Cat # PAB12877) at 2 ug/mL .

Gene Info — NDEL1

Entrez GeneID	81565
Protein Accession#	AAF97497
Gene Name	NDEL1
Gene Alias	DKFZp451M0318, EOPA, MITAP1, NUDEL
Gene Description	nudE nuclear distribution gene E homolog (A. nidulans)-like 1
Omim ID	607538
Gene Ontology	Hyperlink
Gene Summary	This gene encodes a thiol-activated peptidase that is phosphorylated in M phase of the cell cycle. Phosphorylation regulates the cell cycle-dependent distribution of this protein, with a fraction of the protein bound strongly to centrosomes in interphase and localized to mitotic spindles in early M phase. Overall, this protein plays a role in nervous system development. Alternate transcriptional splice variants, encoding different isoforms, have been characterized. [provided by RefSeq]
Other Designations	NUDE-like protein endooligopeptidase A mitosin-associated protein MITAP1 nudE nuclear distribution gene E homolog like 1

Publication Reference

- [Nudel functions in membrane traffic mainly through association with Lis1 and cytoplasmic dynein.](#)

Liang Y, Yu W, Li Y, Yang Z, Yan X, Huang Q, Zhu X.

The Journal of Cell Biology 2004 Feb; 164(4):557.

- [Cyclin-dependent kinase 5 and neuronal migration in the neocortex.](#)

Gupta A, Tsai LH.

Neuro-Signals 2003 Sep; 12(4-5):173.

Application: WB, Human, Mammalian cells

- [Drosophila Lis1 is required for neuroblast proliferation, dendritic elaboration and axonal transport.](#)

Liu Z, Steward R, Luo L.

Nature Cell Biology 2000 Nov; 2(11):776.

Disease

- [Genetic Predisposition to Disease](#)
- [Mental Disorders](#)
- [Neuropsychological Tests](#)
- [Postmortem Changes](#)
- [Schizophrenia](#)