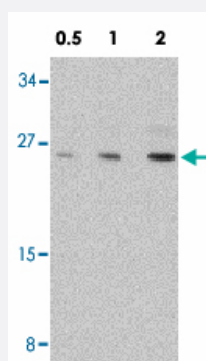


# NOL3 polyclonal antibody

Catalog # PAB12842      Size 100 ug

## Applications



### Western Blot (Tissue lysate)

Western blot analysis of NOL3 in mouse muscle tissue lysate with NOL3 polyclonal antibody (Cat # PAB12842) at 0.5, 1 and 2 ug/mL .

## Specification

<b>Product Description</b>	Rabbit polyclonal antibody raised against synthetic peptide of NOL3.
<b>Immunogen</b>	A synthetic peptide corresponding to C-terminus amino acids of human NOL3.
<b>Host</b>	Rabbit
<b>Reactivity</b>	Human, Mouse, Rat
<b>Form</b>	Liquid
<b>Recommend Usage</b>	Western Blot (0.5-1 ug/mL) The optimal working dilution should be determined by the end user.
<b>Storage Buffer</b>	In PBS (0.02% sodium azide)
<b>Storage Instruction</b>	Store at 4°C for three months. For long term storage store at -20°C. Aliquot to avoid repeated freezing and thawing.
<b>Note</b>	This product contains sodium azide: a POISONOUS AND HAZARDOUS SUBSTANCE which should be handled by trained staff only.

## Applications

- Western Blot (Tissue lysate)

Western blot analysis of NOL3 in mouse muscle tissue lysate with NOL3 polyclonal antibody (Cat # PAB12842) at 0.5, 1 and 2 ug/mL .

## Gene Info — NOL3

**Entrez GeneID** [8996](#)

**Protein Accession#** [AAH12798](#)

**Gene Name** NOL3

**Gene Alias** ARC, CARD2, MYC, MYP, NOP, NOP30

**Gene Description** nucleolar protein 3 (apoptosis repressor with CARD domain)

**Omim ID** [605235](#)

**Gene Ontology** [Hyperlink](#)

**Other Designations** nucleolar protein 3

## Publication Reference

- [Overview of cell death signaling pathways.](#)

Jin Z, El-Deiry WS.

Cancer Biol Ther 2005 Feb; 4(2):139.

- [Alternative splicing determines the intracellular localization of the novel nuclear protein Nop30 and its interaction with the splicing factor SRp30c.](#)

Stoss O, Schwaiger FW, Cooper TA, Stamm S.

The Journal of Biological Chemistry 1999 Apr; 274(16):10951.

- [ARC, an inhibitor of apoptosis expressed in skeletal muscle and heart that interacts selectively with caspases.](#)

Koseki T, Inohara N, Chen S, Nunez G.

PNAS 1998 Apr; 95(9):5156.

## Disease

- [Cardiovascular Diseases](#)
- [Diabetes Mellitus](#)
- [Edema](#)
- [Genetic Predisposition to Disease](#)
- [Hematologic Diseases](#)
- [Occupational Diseases](#)