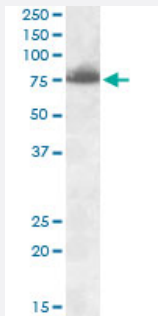


# DLL1 polyclonal antibody

Catalog # PAB12816      Size 100 ug

## Applications



### Western Blot (Tissue lysate)

DLL1 polyclonal antibody (Cat # PAB12816) (0.3 ug/mL) staining of rat heart lysate (35 ug protein in RIPA buffer). Primary incubation was 1 hour. Detected by chemiluminescence.

## Specification

<b>Product Description</b>	Goat polyclonal antibody raised against synthetic peptide of DLL1.
<b>Immunogen</b>	A synthetic peptide corresponding to amino acids at internal region of human DLL1.
<b>Sequence</b>	C-ATQRHLTVGEEWSQD
<b>Host</b>	Goat
<b>Theoretical MW (kDa)</b>	78
<b>Reactivity</b>	Mouse, Rat
<b>Specificity</b>	75 KDa band observed in Mouse Heart and Rat Heart lysates (calculated MW of 78.1 KDa according to human NP_005609.3, 78.5K Da according to Mouse NP_031891.2 and 77.4 KDa according to Rat NP_114452.1). Recommended concentration: 0.3-1 ug/ml.
<b>Form</b>	Liquid
<b>Purification</b>	Antigen affinity purification
<b>Concentration</b>	0.5 mg/mL

<b>Recommend Usage</b>	ELISA (1:16000) Western blot (0.3-1 ug/mL) The optimal working dilution should be determined by the end user.
<b>Storage Buffer</b>	In Tris saline, pH 7.3 (0.5% BSA, 0.02% sodium azide)
<b>Storage Instruction</b>	Store at -20°C. Aliquot to avoid repeated freezing and thawing.
<b>Note</b>	This product contains sodium azide: a POISONOUS AND HAZARDOUS SUBSTANCE which should be handled by trained staff only.

## Applications

- Western Blot (Tissue lysate)

DLL1 polyclonal antibody (Cat # PAB12816) (0.3 ug/mL) staining of rat heart lysate (35 ug protein in RIPA buffer). Primary incubation was 1 hour. Detected by chemiluminescence.

- Enzyme-linked Immunoabsorbent Assay

## Gene Info — DLL1

<b>Entrez GeneID</b>	<a href="#">28514</a>
<b>Protein Accession#</b>	<a href="#">NP_005609.3</a>
<b>Gene Name</b>	DLL1
<b>Gene Alias</b>	DELTA1, DL1, Delta
<b>Gene Description</b>	delta-like 1 (Drosophila)
<b>Omim ID</b>	<a href="#">606582</a>
<b>Gene Ontology</b>	<a href="#">Hyperlink</a>
<b>Gene Summary</b>	DLL1 is a human homolog of the Notch Delta ligand and is a member of the delta/serrate/jagged family. It plays a role in mediating cell fate decisions during hematopoiesis. It may play a role in cell-to-cell communication. [provided by RefSeq]
<b>Other Designations</b>	OTTHUMP00000017690 delta-like 1 delta-like 1 protein

## Publication Reference

- [Decreased Satellite Cell Number and Function in Humans and Mice With Type 1 Diabetes Mellitus is the Result of Altered Notch Signaling.](#)

D'Souza DM, Zhou S, Rebalka IA, MacDonald B, Moradi J, Krause MP, Al-Sajee D, Punthakee Z, Tamopolsky MA, Hawke TJ. Diabetes 2016 Jun; 65(10):3053.

Application: WB-Ti, Mouse, Whole muscle skeletal muscle lysate

- [MicroRNA regulation of cell lineages in mouse and human embryonic stem cells.](#)

Ivey KN, Muth A, Arnold J, King FW, Yeh RF, Fish JE, Hsiao EC, Schwartz RJ, Conklin BR, Bernstein HS, Srivastava D. Cell Stem Cell 2008 Mar; 2(3):219.

Application: IF, Mouse, Mouse embryonic stem cells

## Pathway

- [Notch signaling pathway](#)

## Disease

- [Alzheimer disease](#)