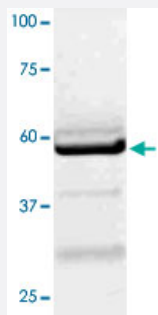


# LCK polyclonal antibody

Catalog # PAB12775      Size 100 ug

## Applications



### Western Blot (Cell lysate)

The whole cell lysate derived from Jurkat was separated in 10% SDS-PAGE, transferred onto NC membrane, and immunoblotted by LCK polyclonal antibody (Cat # PAB12775) at 1 : 500. An immunoreactive band around ~56 kDa is observed.

## Specification

<b>Product Description</b>	Rabbit polyclonal antibody raised against synthetic peptide of LCK.
<b>Immunogen</b>	A synthetic peptide corresponding to residues surrounding Y505 of human, rat, bovine and dog LCK.
<b>Host</b>	Rabbit
<b>Reactivity</b>	Human, Mouse, Rat
<b>Specificity</b>	This antibody recognizes LCK without phosphorylation at Tyr505. It does not recognize phosphorylated peptide.
<b>Form</b>	Liquid
<b>Quality Control Testing</b>	Antibody Reactive Against Synthetic Peptide.
<b>Recommend Usage</b>	Western Blot (0.1-1 ug/mL) ELISA (0.01-0.1 ug/mL) Immunoprecipitation (2-5 ug/mL) The optimal working dilution should be determined by the end user.
<b>Storage Buffer</b>	In TBS, pH 7.2 (BSA, 10% Proclin300)

**Storage Instruction**

Store at 4°C. For long term storage store at -20°C or lower.  
Aliquot to avoid repeated freezing and thawing.

## Applications

- Western Blot (Cell lysate)

The whole cell lysate derived from Jurkat was separated in 10% SDS-PAGE, transferred onto NC membrane, and immunoblotted by LCK polyclonal antibody (Cat # PAB12775) at 1 : 500. An immunoreactive band around ~56 kDa is observed.

- Immunohistochemistry

- Immunoprecipitation

- Enzyme-linked Immunoabsorbent Assay

## Gene Info — LCK

Entrez GeneID	<a href="#">3932</a>
---------------	----------------------

Gene Name	LCK
-----------	-----

Gene Alias	YT16, p56lck, pp58lck
------------	-----------------------

Gene Description	lymphocyte-specific protein tyrosine kinase
------------------	---

Omim ID	<a href="#">153390</a>
---------	------------------------

Gene Ontology	<a href="#">Hyperlink</a>
---------------	---------------------------

Gene Summary	This gene is a member of the Src family of protein tyrosine kinases (PTKs). The encoded protein is a key signaling molecule in the selection and maturation of developing T-cells. It contains N-terminal sites for myristylation and palmitylation, a PTK domain, and SH2 and SH3 domains which are involved in mediating protein-protein interactions with phosphotyrosine-containing and proline-rich motifs, respectively. The protein localizes to the plasma membrane and pericentrosomal vesicles, and binds to cell surface receptors, including CD4 and CD8, and other signaling molecules. Multiple alternatively spliced variants, encoding the same protein, have been described. [provided by RefSeq]
--------------	--

Other Designations	T-lymphocyte specific protein tyrosine kinase p56lck p56(LSTRA) protein-tyrosine kinase protein tyrosine kinase proto-oncogene tyrosine-protein kinase LCK
--------------------	--

## Gene Info — Lck

Entrez GeneID	<a href="#">313050</a>
Gene Name	Lck
Gene Alias	Lck1, Lcktkr
Gene Description	lymphocyte-specific protein tyrosine kinase
Gene Ontology	<a href="#">Hyperlink</a>
Other Designations	lymphocyte protein tyrosine kinase

## Gene Info — LCK

Entrez GeneID	<a href="#">478151</a>
Gene Name	LCK
Gene Alias	-
Gene Description	lymphocyte-specific protein tyrosine kinase
Gene Ontology	<a href="#">Hyperlink</a>
Other Designations	-

## Gene Info — LCK

Entrez GeneID	<a href="#">508890</a>
Gene Name	LCK
Gene Alias	MGC126900
Gene Description	lymphocyte-specific protein tyrosine kinase
Gene Ontology	<a href="#">Hyperlink</a>
Other Designations	-

## Publication Reference

- [Suppression of proximal T cell receptor signaling and lytic function in CD8+ tumor-infiltrating T cells.](#)

Monu N, Frey AB.

Cancer Research 2007 Dec; 67(23):11447.

## Pathway

- [Natural killer cell mediated cytotoxicity](#)
- [Primary immunodeficiency](#)
- [T cell receptor signaling pathway](#)

## Disease

- [HIV Infections](#)
- [Tobacco Use Disorder](#)