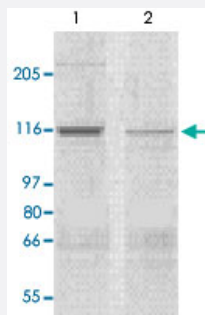


# Corin polyclonal antibody

Catalog # PAB12762      Size 100 ug

## Applications



### Western Blot (Tissue lysate)

The tissue lysates derived from mouse heart (lane 1) or rat heart (lane 2) were immunoprobed by Corin polyclonal antibody (Cat # PAB12762) at 1 : 500. An immunoreactive band is observed around ~120kDa. A faint band ~ 205 kDa is observed in mouse heart tissue.

## Specification

**Product Description** Rabbit polyclonal antibody raised against synthetic peptide of Corin.

**Immunogen** A synthetic peptide corresponding to N-terminus of mouse Corin.

**Host** Rabbit

**Theoretical MW (kDa)** 120

**Reactivity** Mouse, Rat

**Specificity** This antibody recognizes ~120 KDa of mouse Corin.

**Form** Liquid

**Quality Control Testing** Antibody Reactive Against Synthetic Peptide.

**Recommend Usage**

- Western Blot (0.1-1 ug/mL)
- ELISA (0.01-0.1 ug/mL)
- Immunoprecipitation (2-5 ug/mL)
- Immunohistochemistry (0.5-2 ug/mL)
- The optimal working dilution should be determined by the end user.

**Storage Buffer** In TBS, pH 7.2 (BSA, 10% Proclin300)

**Storage Instruction**

Store at 4°C. For long term storage store at -20°C or lower.  
Aliquot to avoid repeated freezing and thawing.

## Applications

- Western Blot (Tissue lysate)

The tissue lysates derived from mouse heart (lane 1) or rat heart (lane 2) were immunoprobed by Corin polyclonal antibody (Cat # PAB12762) at 1 : 500. An immunoreactive band is observed around ~120kDa. A faint band ~ 205 kDa is observed in mouse heart tissue.

- Immunohistochemistry

- Immunoprecipitation

- Enzyme-linked Immunoabsorbent Assay

## Gene Info — Corin

Entrez GeneID	<a href="#">53419</a>
---------------	-----------------------

Gene Name	Corin
-----------	-------

Gene Alias	AV273130, Lrp4, MGC118735
------------	---------------------------

Gene Description	corin
------------------	-------

Gene Ontology	<a href="#">Hyperlink</a>
---------------	---------------------------

Other Designations	low density lipoprotein-related protein 4
--------------------	---

## Publication Reference

- [Corin is co-expressed with pro-ANP and localized on the cardiomyocyte surface in both zymogen and catalytically active forms.](#)

Gladysheva IP, Robinson BR, Houg AK, Kovats T, King SM.

Journal of Molecular and Cellular Cardiology 2008 Jan; 44(1):131.

Application: IF, WB, Mouse, Rat, Mouse brain, heart, liver, lung, skeletal muscle, Rat atrial cardiomyocytes